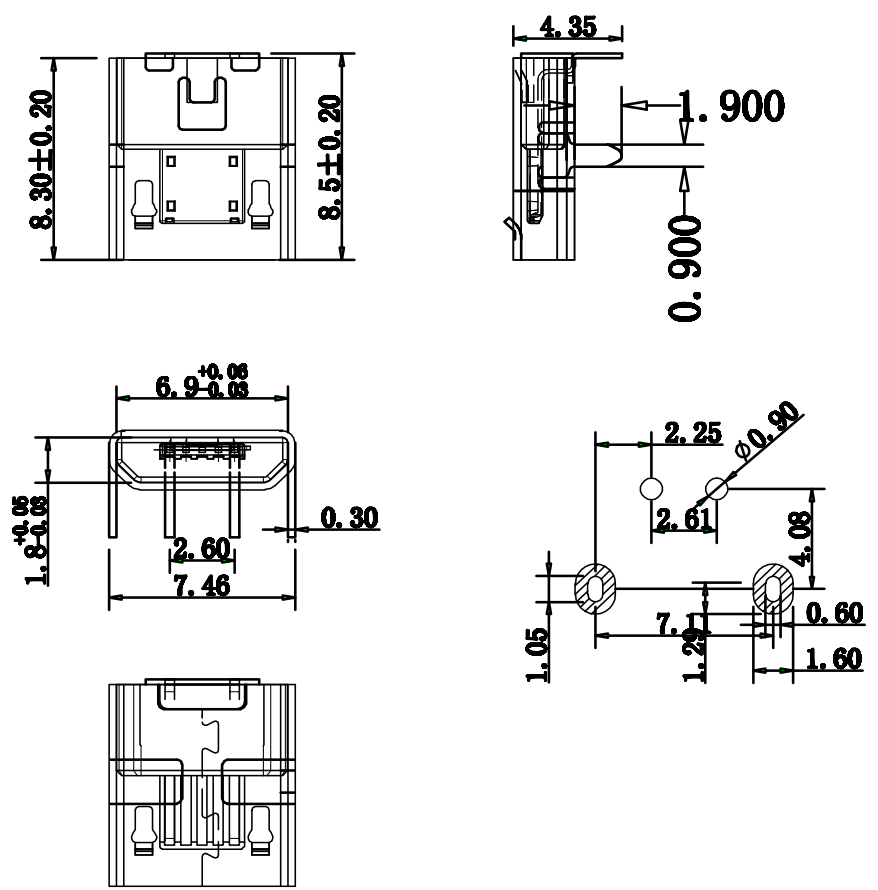


Kinghelm®



Mapx	Modification	Date	Draw	Approve
------	--------------	------	------	---------

Specifications:

Electrical:

- Current Rating
1.5A/contact terminal
- Voltage Rating
30V DC
- Contact Resistance
30 milliohms MAX
- Dielectric Withstanding Voltage:
500 V AC AT Sea Level
- Insulation Resistance:
1000MEGA ohms MIN

Mechanical:

- Connector Mate and Unmate Force
Mate force:3.57kgf(MAX)
Unmate force:1.02kgf(MIN)

Material:

Housing:
Hing Temperature Thermoplastics,

Contact:Copper Alloy C1591
Shell: Copper Alloy C2680/SPCC

Finish:

Contact: Plated Gold in Mating Area
Tin On Solder Talls

50U"(MIN)锡,镀金区域镀100-200U"Gold-pating 1U"

Shell:
80U "(MIN) Tin is plated
around the copper casing

Nickel Plating

MANUFACTURE DWG		SHENZHEN KINGHELM ELECTRONIC CO., LTD.					WWW.BDS666.COM			
TOLERANCE UNLESS OTHERWISE		Model: KH-MICRO-DIP-2P					0755-83044319			
.X±0.20	X.±5'	DATE	2016.10.20	UNIT	MM	DRAWING		DWG NO.		
.XX±0.10	.X±2'	CHECKED		SCALE	1:1	DESIGN	LIUFU	NAME	MICRO 2P 90°	
.XXX±0.02	.XX±1'	APPROVE		VIEW			VER	AO	SHFET	001