

Kinghelm®

(SPECIFICATION):
 (TEMPERATURE RANGE):-40~+70℃
 (VOLTAGE RATING):125V
 (CURRENT RATING):1.5A
 (CONTACT RESISTANCE):≤30mΩ
 (INSULATION RESISTANCE):≥500MΩ
 (DIELECTRIC STRENGTH):500V AC/(50HZ)/Min
 (MATING AND UNMATING FORCE):3~20N
 (DURABILITY):750 CYCLES MIN

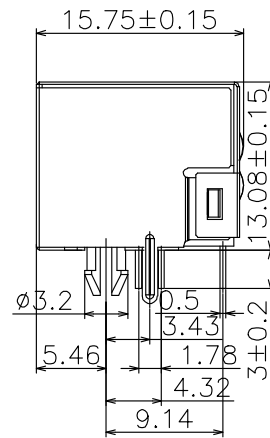
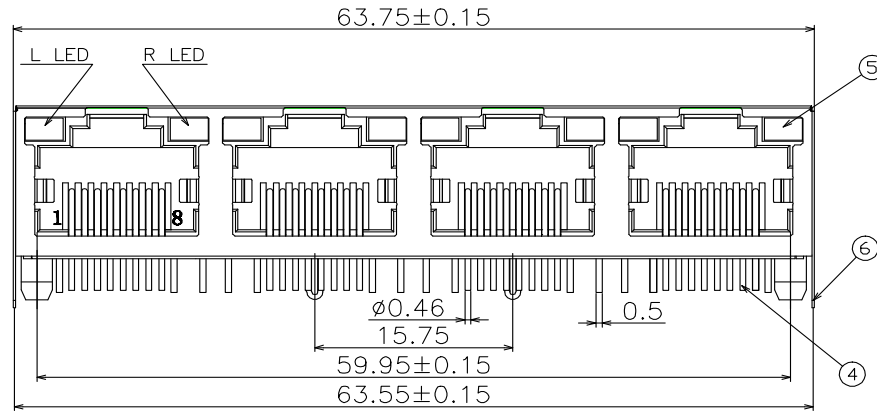


Table 1

X	Terminal Plating
0	Au Fu" Plating
1	Au 1u" Plating
2	Au 2u" Plating
3	Au 3u" Plating
4	Au 6u" Plating
5	Au 10u" Plating
6	Au 15u" Plating
7	Au 30u" Plating

Material & Plating

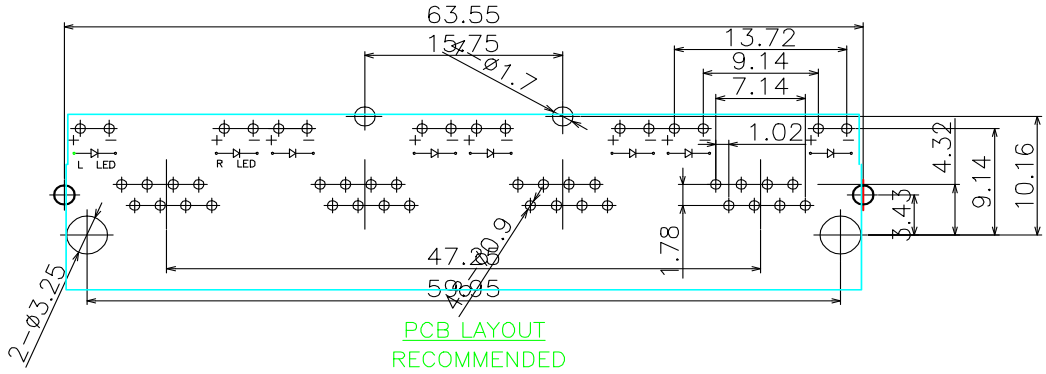
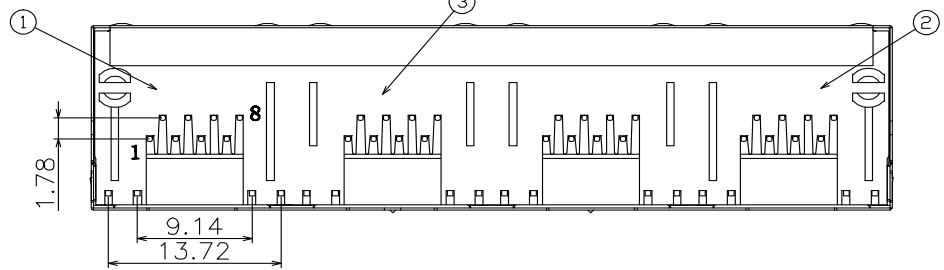
Part NO.:
RCH563114-DW-X-XX

LED position

D	L LED/R LED
YG	YELLOW/GREEN
GY	GREEN/YELLOW
GG	GREEN/GREEN
OO	OTHER/OTHER

Material & Color

XX	Material/Color
BB	PBT/BLACK
BW	PBT/WHITE
AB	PA/BLACK
AW	PA/WHITE
OO	OTHER/OTHER



No.	Designation	Materials	Quantity	Pating/Colour	Remark
6	Housing	862	1	NI	
5	LED lamp	树脂/FE	8	NI/AG	
4	Contact Pin	PB0SPBOR BRONZE	32	FU	
3	Midbody	PA46	2	BLACK	
2	Right split	PA46	1	BLACK	
1	Left split	PA46	1	BLACK	

Outline drawing of network socket

SHENZHEN KINGHELM ELECTRONIC CO., LTD.		www.BDS666.COM	
KH-RCH56- -8P8C-1X4-D		0755-83044319	
General tolerance			
30~	±0.25	Product name	RC8-56- 31-14
10~50	±0.20	Part Number	RCH563114-YGW-O-AB
~10	±0.16	Model	RJ46 Drawing Number
Angle	±2°		
Page	1 of 1	Version	Unit:mm Scale:1:1 Paper:A4

禁止在图面上随意涂改

A/0	Number of Changes	Drawn	Date	Checked	Date	Approved	Date

Newly published

Marks of Changes

number of Changes

Drawn

Date

Drawn

Date

checked

Date

Approved

Date