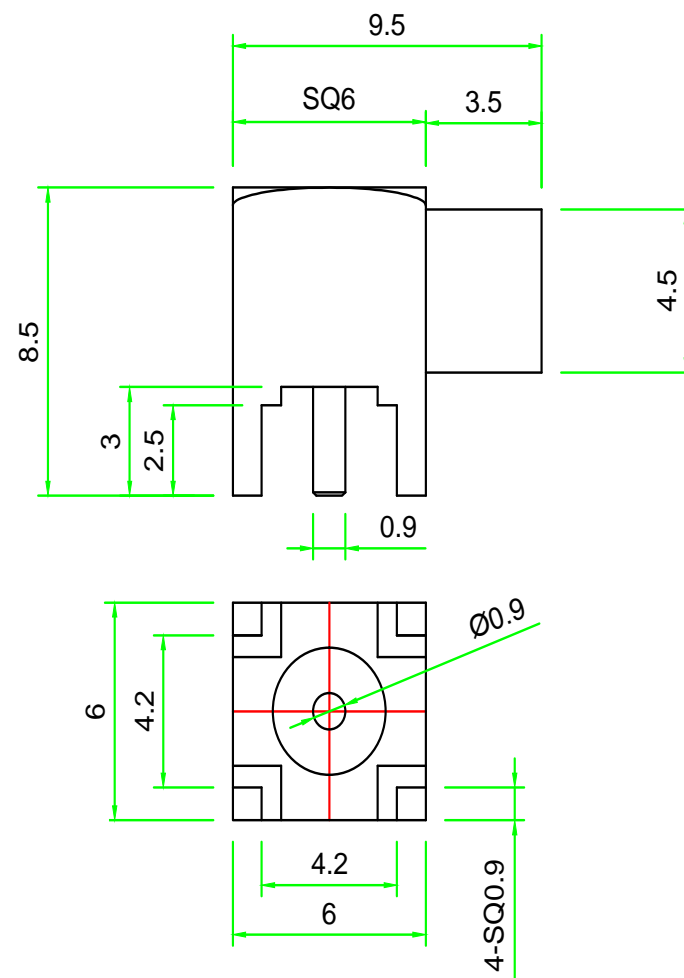


Kinghelm®

Version	Modified content	Modifier	Date



Material Requirements:

- 1.Housing: Brass gold plating (C3605) AU:0.02~0.04um
- 2.Insulator:PTFE
- 3.hole: (HPb59-1) AU:0.02~0.04um

Technical Specifications:

- 1.Unspecified Tolerance is ± 0.2
- 2.Uniform and smooth coating without stains and scratches
- 3.Materials shall meet RoSH requirements

Product name/ Specification	MCX-KWE	SHENZHEN KINGHELM ELECTRONIC CO., LTD.	
Customer P/N:	KH-MCX-KWE-W	WWW.BDS666.COM	0755-83044319
Date:	2019. 6. 19	Drawn :	
Drawing Number		Checked :	