

NOTES: 1.INSULATOR:HIGH-TEMP THERMOPLASTIC, UL94V-0
 COLOR:BLACK
 2.CONTACT:COPPER ALLOY
 PLATING:CONTACT AREA GOLD FLASH AND SOLDER AREA TIN
 OR GOLD FLASH OVERALL NICKEL UNDER PLATED

ORDER INFORMATION: WB105-X XX X-04~07,A4 X

PACKING: E:TUBE
 R:PLASTIC REEL
 L:PAPER REEL

TYPE

E:POST AND FITTING NAIL
 L:POST
 F:FITTING NAIL
 N:NO POST AND FITTING NAIL

PIN

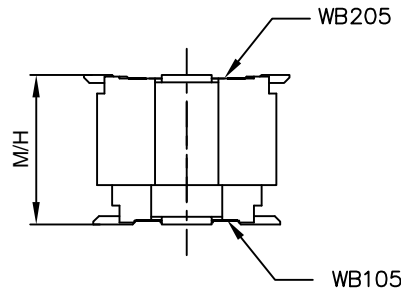
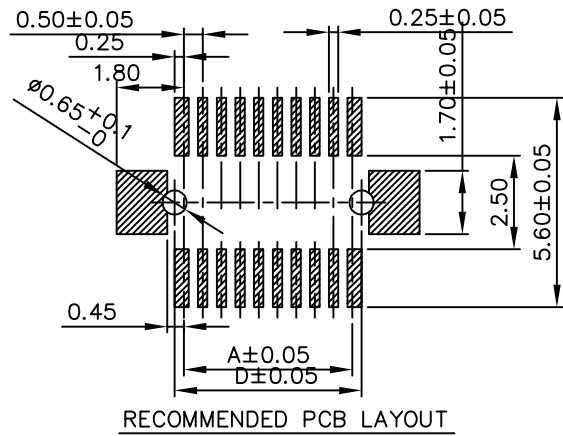
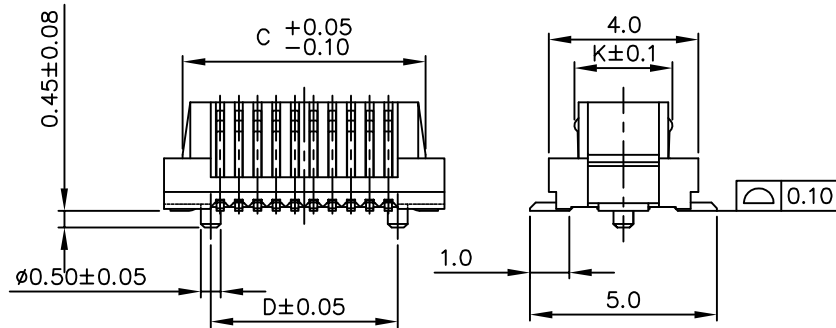
PLATING

E:TIN
 F:GOLD FLASH

WB105:0.5 BOARD TO BOARD SMT V/T TYPE MALE
 (HALOGEN FREE)

M/H	TYPE	H	J	K	L
3.5					
4.0					
5.0					
6.0					
7.0	04,A4	1.00	3.00	2.6	1.5
8.0					
9.0					
10.0					
11.0					
4.5					
5.5					
6.5					
7.5	05	1.50	3.50	2.6	1.5
8.5					
9.5					
10.5					
11.5					
12.0					
13.0					
14.0	06	7.00	10.00	2.54	2.6
15.0					
16.0					
17.0					
12.5					
13.5					
14.5	07	7.50	10.50	2.54	2.6
15.5					
16.5					
17.5					

PIN NO.	A	B	C	D
10	2.0	5.0	4.0	2.5
12	2.5	5.5	4.5	3.0
14	3.0	6.0	5.0	3.5
16	3.5	6.5	5.5	4.0
18	4.0	7.0	6.0	4.5
20	4.5	7.5	6.5	5.0
22	5.0	8.0	7.0	5.5
24	5.5	8.5	7.5	6.0
26	6.0	9.0	8.0	6.5
28	6.5	9.5	8.5	7.0
30	7.0	10.0	9.0	7.5
32	7.5	10.5	9.5	8.0
34	8.0	11.0	10.0	8.5
36	8.5	11.5	10.5	9.0
38	9.0	12.0	11.0	9.5
40	9.5	12.5	11.5	10.0
42	10.0	13.0	12.0	10.5
44	10.5	13.5	12.5	11.0
46	11.0	14.0	13.0	11.5
48	11.5	14.5	13.5	12.0
50	12.0	15.0	14.0	12.5
52	12.5	15.5	14.5	13.0
54	13.0	16.0	15.0	13.5
56	13.5	16.5	15.5	14.0
58	14.0	17.0	16.0	14.5
60	14.5	17.5	16.5	15.0
62	15.0	18.0	17.0	15.5
64	15.5	18.5	17.5	16.0
66	16.0	19.0	18.0	16.5
68	16.5	19.5	18.5	17.0
70	17.0	20.0	19.0	17.5
80	19.5	22.5	21.5	20.0



SHENZHEN KINGHELM ELECTRONIC CO., LTD.		WWW.BDS666.COM	
KH-WB105-F20E-04L		0755-83044319	
GENERAL TOLERANCE UNLESS OTHERWISE SPECIFIED	DRAWN <i>Nelly OCT-21-2012</i>	PART NO. WB105-XXXX-04~07,A4X	
X.X ±0.25	CHECKED	TITLE? 0.5 BOARD TO BOARD SMT V/T TYPE MALE	
X.XX ±0.13	APPROVED		
X.XXX			
ANG. ±0°30'			
SHEET	1/1	UNIT MM	SCALE 5?1
		SIZE A4	REV A