

Product Performance and Specifications Acknowledgement

Material name: KH1NB(/900/1800/2170/2700)C3600-03-A/3-Suction Cup

Colour of Sample: **Black**

Type of Sample: Sucker-type external antenna

Customer P/N:

Mold preparation products Other

Supplier: SHENZHEN KINGHELM ELECTRONIC CO., LTD.

Prepared	Structure	Quality	Approval	SENDING DATE
LI HUI	LIU WENHUI	HE JUNJU	LIU QIANHONG	

Customer:

Department	Confirm	Date	Status	Signature
Electronics				
Structure				
Quality				
Item				

Confidentiality

Shenzhen Kinghelm Electronics Co., Ltd. is entitled to the ownership of proprietary technical information, which is not allowed to be disclosed to any person or company without the prior written consent of Shenzhen Kinghelm Electronics Co., Ltd.



1、 Content

1、 SPECIFICATIONS

2、 IMAGE

3、 DRAWING

4、 MECHANICAL CHARACTERISTICS

5、 DURABILITY

6、 VSWR

7、 SMITH CHART

8、 RF RADIATION PATTERN

1、PRODUCT TECHNICAL SPECIFICATIONS

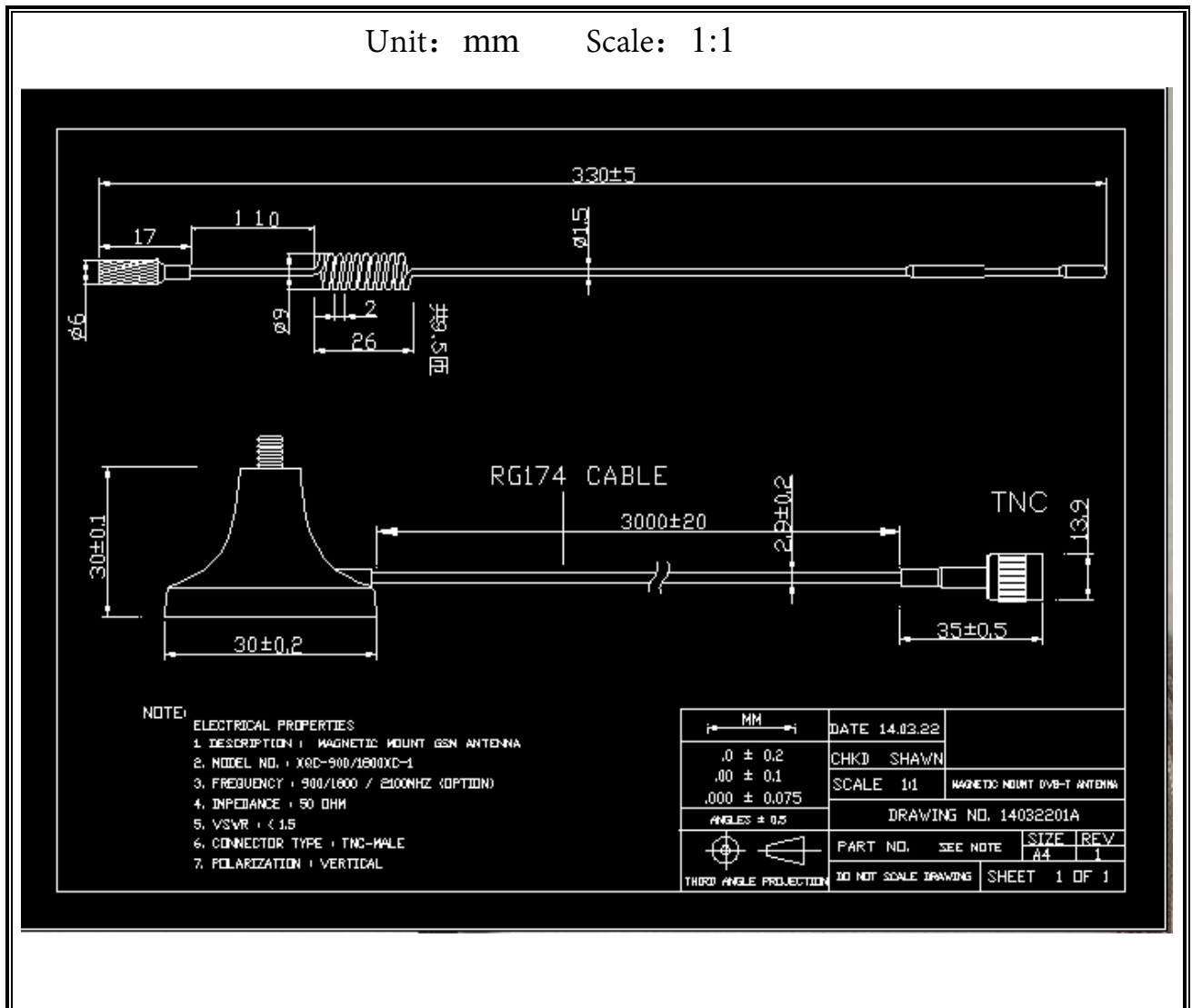
Electrical Specifications	
Frequency Range (MHz)	900/1800/2170/2700
Bandwidth (MHz)	NA
Input Impedence (Ω)	50
V.S.W.R	≤ 2
Gain (dBi)	12
Max Input Power (w)	5
Mechanical Specifications	
Antenna Length (mm)	360
Connect Type	Inpex I male
Radome Color	Black
Weight (g)	70

2、IMAGE



IPEX connector I Terminal (interface can be customized)

3. DRAWING



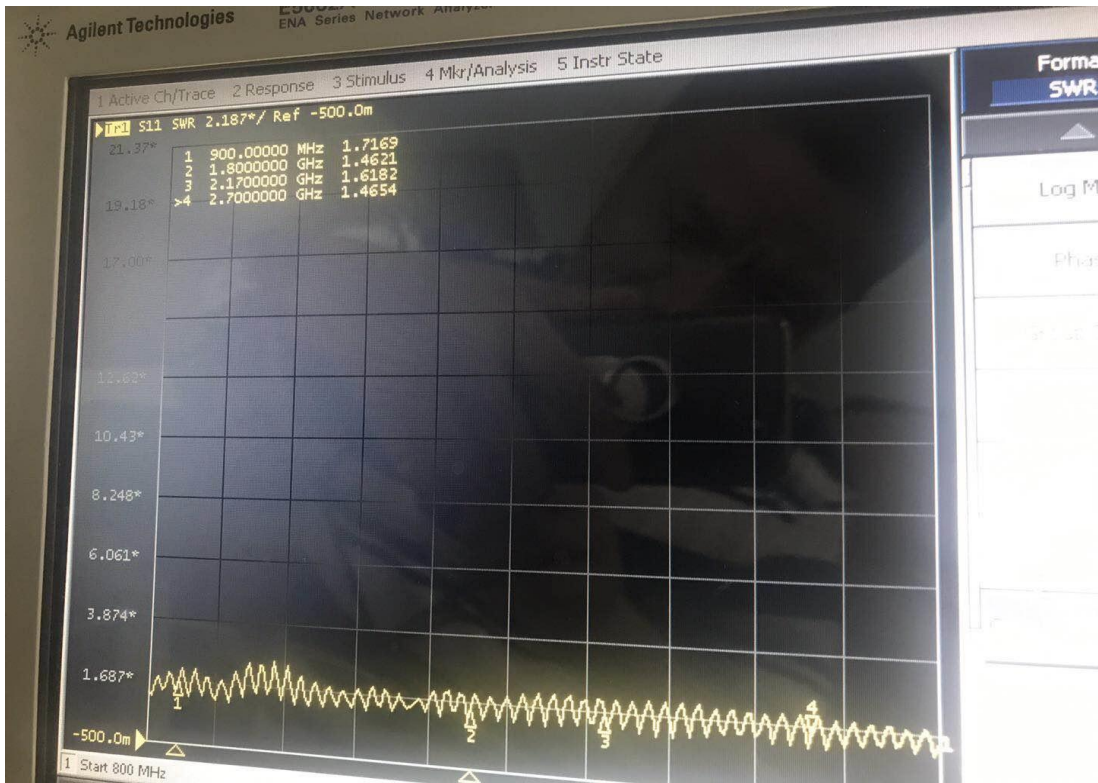
4、MECHANICAL CHARACTERISTICS

1	BENDING TEST	Put load 120g to 30cm cable from the end of the connector, fixed joints, swaying test at an angle of 60 degrees , test features after 1000 times	After 1000 times test no visible damage
2	STRENG TEST	Put 15pounds static load to the end of the cable continue 1 minute	After test no visible damage
3	VIBRATION TEST	The X-axis direction for 120 minutes, and the Y-axis direction 120 minutes, the Z-axis direction 240 minutes as vibration testing of 1.1mm amplitude and 33.30Hz/sec of frequency	After test no visible damage

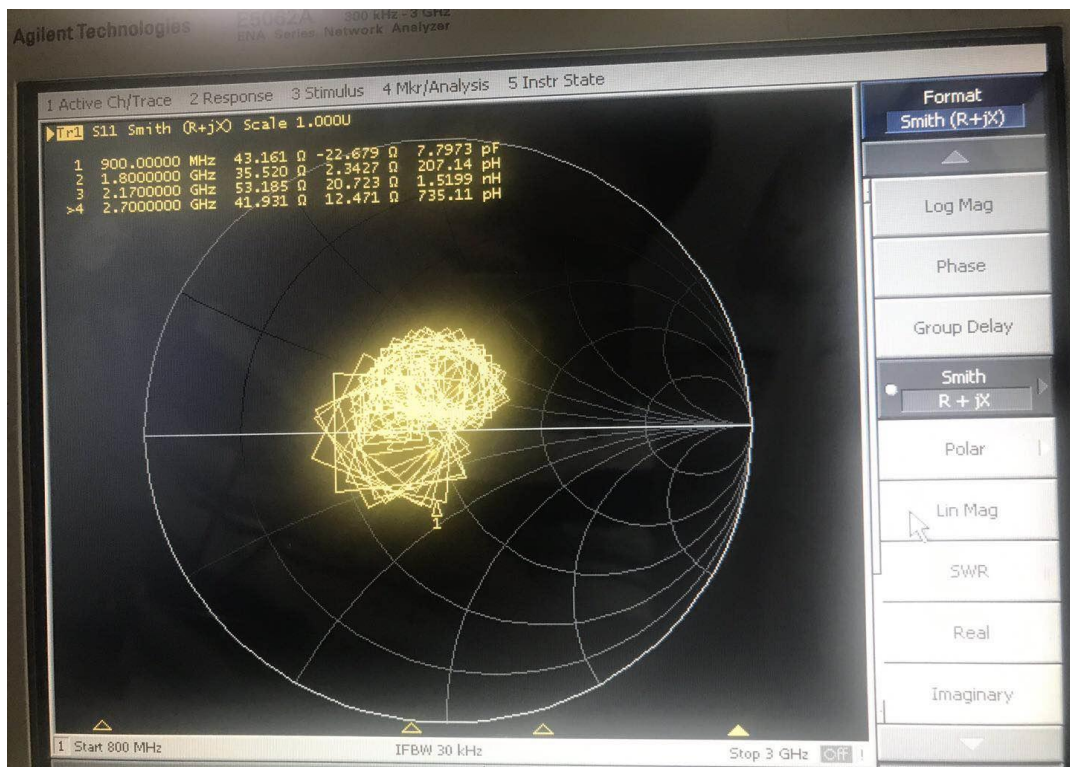
5、 DURABILITY

1	SAIT SPRAY TEST	Salt Spray Test: According to GB1266-86 standards Distilled water: one time distillation PH6.5~7 Spray volume: 1.4me80cm ² /h Compressed air pressure: 1Kgf/ cm ² Test relative degree: 98° Temperature: 45° ~47° Pressure temperature: 35° Test time: 24hr	All characteristic range is 30% of the initial value
2	HEAT TEST	85+2°C for 24 hours, after keep in normal condition for 30mim the to test.	
3	HUMIDITY TEST	90-95%RH for 24hours, after keep in normal condition for 30mim the to test.	
4	COLD TEST	-40+2°C for 24hours, after keep in normal condition for 30mim the to test.	

6、VSWR

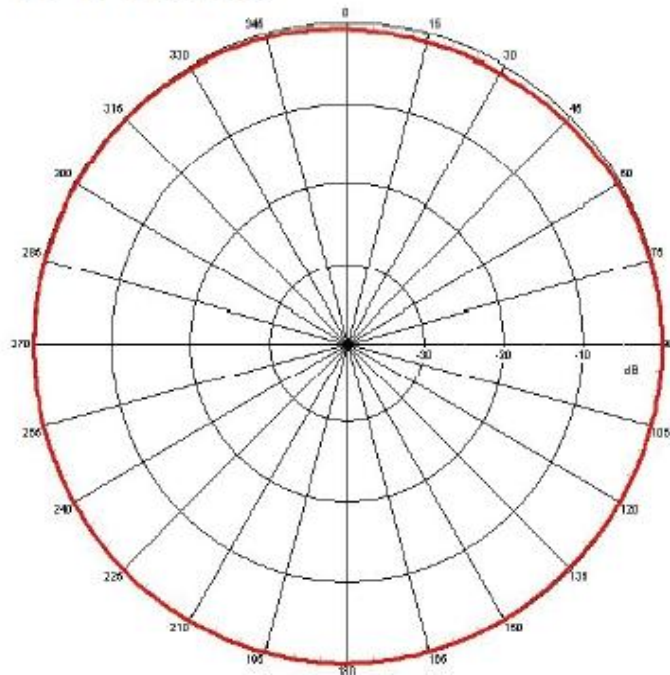


7、SMITH CHART



8、RF RADIATION PATTERN

H-Plane



E-Plane

