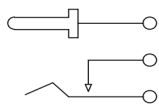


P C B

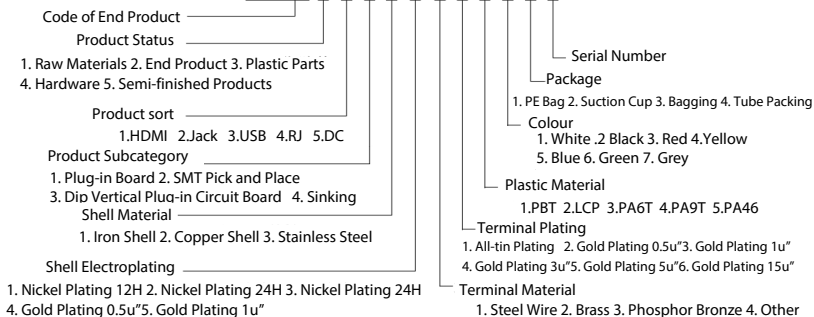


Schematic

Technical Specifications :

1. Operating Temperature: -25 TO +70
2. Rated Voltage, Current : DC30V 1A
3. Contact Resistance : 30mΩ MAX
4. Insulation Resistance : 100MΩ Min
5. Dielectric Withstand Voltage Test : AC 500V
6. Insertion-withdrawal Force : 3~25N
7. Service Life : 5000 times

Q SXXXXXXXXXXXXXX



part No.	Materials P/N	Designation	Material	Electroplating / color	Remark
E	/	Core Pin	Yellow Steel	Tin-plating	
D	/	Pins	Brass	Tin-plating	
C	/	Flexible Piece	Stainless Steel	Tin-plating	
B	/	Rear Plug	PBT	Black	
A	/	Dock	PBT	Black	

N/A	Number of Marks	Change of Document Number	Signature	Date	Visual Angle	Unspecified Tolerance	Weight	Scale	DC Power Jack 2.0 Core (Flexible Piece Base/Side Base 2.0)
						X. ±0.30 . X±0.20 X° ±2° . XX±0.15 X° ±1° . XXX±0.05 . XX° ±0.5°		1:01	
	Designed by	LAI JI REN			Drawing	N/A			WWW. BDS666. COM
	Checked by	ZHANG SONG QIANG							
	Process				1 Page in Total		Page 1		
	Standardization Approval				SHENZHEN KINGHELM ELECTRONIC CO., LTD.				
					KH-DC-005-2.5				0755-83044319