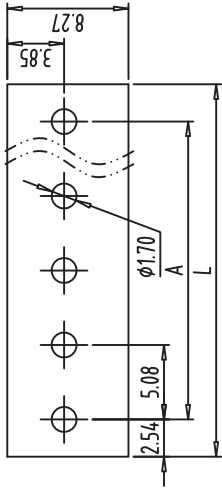
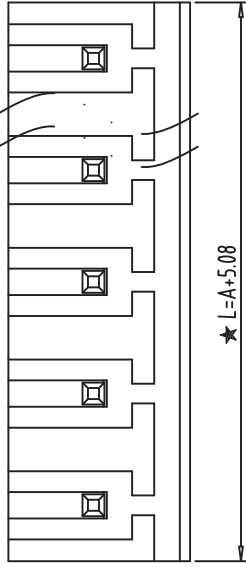
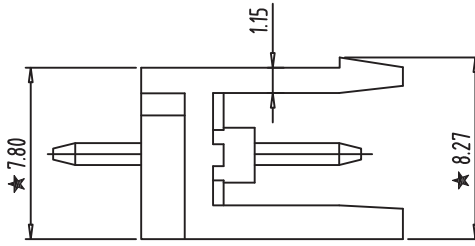
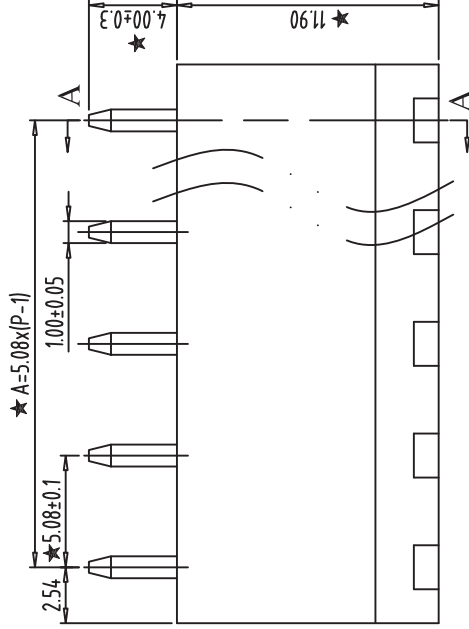


REV	CONTENT	CHK	DATE
V0.0	CONTENT	SK	2014/08/19



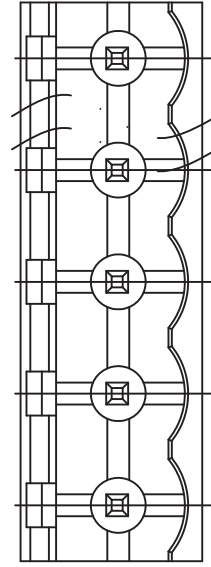
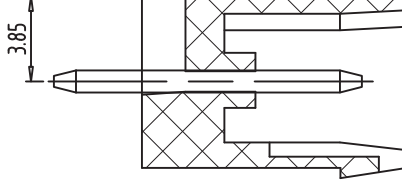
**PCB LAYOUT**  
S=2:1



**SECTION: A-A**

**NOTES:**

1. Rating: 300V 15A ;
2. Insulation Withstands Voltage: AC2000V/MIN
3. Insulation Resistance: 500MΩ or more at DC500V
4. Using Temperature Range: -40°C ~ +105°C
5. "★" is the important dimension
6. RoHS compliance



Total Pitch Tolerances		Nominal dimension range														
in mm		in mm														
over	to	0	30	53	70	90	115	150	200	250	320	all	0	100	150	
±0.18	±0.20	±0.25	±0.3	±0.35	±0.44	±0.60	±0.70	±0.85	±0.20	±0.25	±0.30	±0.35	±0.44	±0.55	±0.70	±0.80
													0.2	0.3	0.3	0.5

ITEM	NAME OF PART	NO. OF PART	Q'TY	MATERIAL	NOTE
DWG.	SK	2014/08/19	SIZE	A-4	
CHK.			SCALE	3-1	2EDG-5.08
APP.			NAME		
				SHENZHEN KINGHELM ELECTRONIC CO., LTD.	
				WWW.BDS666.COM	
				0755-83044319	