

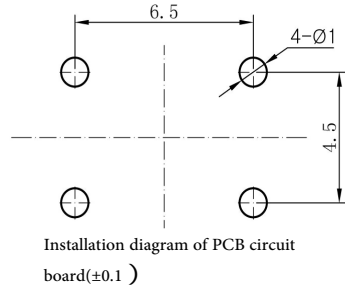
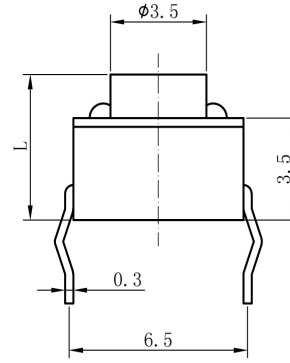
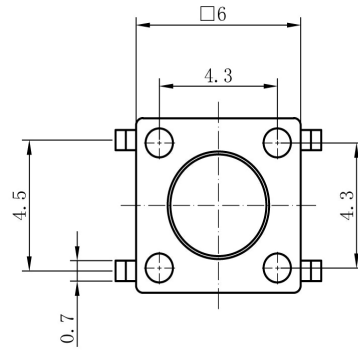
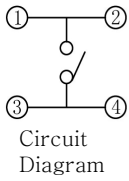
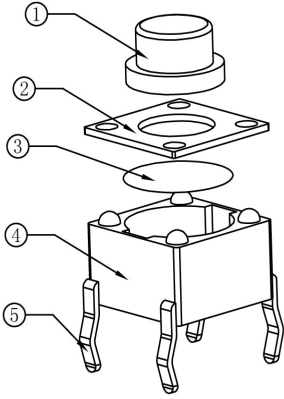
Product specifications

Date : 2016.05.28

Product name : Tact Switch

Model : KH-6X6X19H-TJ

Dimension : 6*6* 19



Technical Specifications :

1. Practical temperature: -25~+85
2. Rating: DC 120V 0.1A
3. Contact Resistance: 30m
4. Insulation Resistance: 100m
5. Withstand Voltage: AC250V (50Hz)/min
6. Operating force: 260g±30
7. Service Life: 100000 times
8. Height L and sizes can be optional as required by customers
9. The unspecified dimensional tolerance shall be in accordance with the table in the lower left corner

29	SH-TS-0128-00-29	26.0
28	SH-TS-0128-00-28	24.0
27	SH-TS-0128-00-27	22.0
26	SH-TS-0128-00-26	21.0
25	SH-TS-0128-00-25	20.0
24	SH-TS-0128-00-24	19.0
23	SH-TS-0128-00-23	18.0
22	SH-TS-0128-00-22	17.0
21	SH-TS-0128-00-21	16.0
20	SH-TS-0128-00-20	15.0
19	SH-TS-0128-00-19	14.0
18	SH-TS-0128-00-18	13.0
17	SH-TS-0128-00-17	12.5
16	SH-TS-0128-00-16	12.0
15	SH-TS-0128-00-15	11.0
14	SH-TS-0128-00-14	10.5
13	SH-TS-0128-00-13	10.0
12	SH-TS-0128-00-12	9.5
11	SH-TS-0128-00-11	9.0
10	SH-TS-0128-00-10	8.5
9	SH-TS-0128-00-09	8.0
8	SH-TS-0128-00-08	7.5
7	SH-TS-0128-00-07	7.0
6	SH-TS-0128-00-06	6.5
5	SH-TS-0128-00-05	6.0
4	SH-TS-0128-00-04	5.5
3	SH-TS-0128-00-03	5.0
2	SH-TS-0128-00-02	4.5
1	SH-TS-0128-00-01	4.3
N	Part NO.	Height
O.		L(mm)

Unspecified tolerance (±)

Grade	A	B	C
0~4	0.03	0.10	0.20
4~16	0.08	0.15	0.30
16~64	0.12	0.25	0.50
64~250	0.25	0.40	0.80

No.	Name	Part No.	Quantity	Materials	Remark	Approval
5	Inserts	SH-TS-0128-05-00	1	H62Y T=0.3		
4	Base	SH-TS-0128-04-00	1	PAG8 BLACK	Designed	
3	Reed	SH-TS-0128-03-00	1	Silver Steel Belt T=0.1	Checked	
2	Cover plate	SH-TS-0128-02-00	1	Cold rolled steel strip T=0.3	Craft	
1	Nuts	SH-TS-0128-01-00	1	PAG8 BLACK	Standardization	

SHENZHEN KINGHELM ELECTRONIC CO., LTD.

WWW.BDS666.COM

KH6X6X19H-TJ

0755-83044319

SH-TS-0128-00-00

Stage Mark	Weight (g)	Scale
		5:1
Page 1	1 page in total	

MODEL NO.

Tact Switch

ORGANIZER

HE JUNJU

AUDITING

LAI JIREN

AUTHORIZE

ZHANG SONGQIANG

1. RATING

:DC 12V 50mA

2. ELECTRICAL CHARACTERISTICS

:

ITEM

TEST CONDITIONS

PERFORMANCE

2. 1

CONTACT RESISTANCE

MEASURED AT SMALL CURRENT (100 mA OR LESS)

30m Ω MAX

2. 2

INSULATION RESISTANCE

APPLY A VOLTAGE OF 100V DC FOR 1 MIN,
TO FOLLOWING PORTIONS AFTER WHICH
MEASUREMENT SHALL BE MADE.

(1) BETWEEN BODY AND CONDUCTOR
(2) BETWEEN CONDUCTORS NOT TO BE CONTACT.

100M Ω MIN

2. 3

DIELECTRIC STRENGTH

AC 250V (50-60Hz) FOR 1 MIN TRIP CURRENT: 0.5mA

(1) BETWEEN TERMINALS.
(2) BETWEEN INDIVIDUAL TERMINALS AND FRAME.

 WITHOUT DAMAGE TO
PARTS ARCING OR
BREAKDOWN ETC.

3. MECHANICAL CHARACTERISTICS

ITEM

TEST CONDITIONS

PERFORMANCE

3. 1

OPERATING FORCE

 PAY ONE'S RESPECTS
TO THIRDLU PAGE

3. 2

TERMINAL STRENGTH

A STATIC LOAD OF (150gf) SHALL BE APPLIED TO
THE TIP OF THE TERMINAL FOR 1 MIN IN ANY
DIRECTION

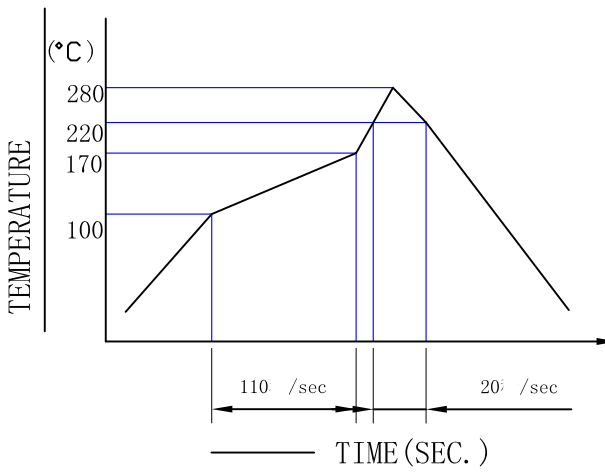
 ELECTRICAL
CHARACTERISTICS
SHALL BE SATISFIED
WITHOUT DAMAGE OR
EXCESSIVE LOOSENESS
OF ACTUATOR

3. 3

 PRACTICAL TEMPERATURE
RANGE

Operate at - 25 °C - + 70 °C

Kinghelm®		DOCUMENT NUMBER	
		DATE	2016/5/28
SPECIFICATION		PAGE	5 pages in total, page 4
	ITEM	TEST CONDITIONS	PERFORMANCE
3.4	STANDARD ATMOSPHERIC CONDITIONS	UNLESS OTHERWISE SPECIFIED. THE STANDARD RANGE OF ATMOSPHERIC CONDITIONS FOR MAKING MEASUREMENTS AND TESTS ARE AS FOLLOWS: (1) AMBIENT TEMPERATURE: 5°C TO 35°C (2) RELATIVE HUMIDITY: 45% TO 85% (3) AIR PRESSURE : 80Kpa TO 106Kpa	
4. DURABILITY			
4.1	LIFE TEST	WITHOUT LOAD: AN ACTUATOR SHALL BE SUBJECT TO 100,000 CYCLES AT A SPEED OF 20 CYCLES FOR 1 MIN.	(1) CONTACT RESISTANCE SHALL BE 200mΩ MAX (2) MECHANICAL AND ELECTRICAL CHARACTERISTICS SHALL BE SATISFIED.
4.2	HEAT TEST	THE SWITCH SHALL BE STORED AT A TEMPERATURE OF 85±2°C FOR 96 HOURS . AND THEN IT SHALL BE SUBJECTED TO THE CONTROLLED RECOVERY CONDITIONS FOR 1 HOUR AFTER WHICH MEASUREMENT SHALL BE MADE.	THERE SHALL BE NO DAMAGE ON APPEARANCE. MECHANICAL AND ELECTRICAL CHARACTERISTICS SHALL BE SATISFIED.
4.3	COLD TEST	THE SWITCH SHALL BE STORED AT A TEMPERATURE OF -25±3°C FOR 96 HOURS . AND THEN IT SHALL BE SUBJECTED TO THE CONTROLLED RECOVER CONDITIONS FOR 1 HOURS AFTER WHICH MEASUREMENT SHALL BE MADE.	THERE SHALL BE NO DEFORMATION OR CRACKS IN MOLDED PART.
4.4	HOMIDITY TEST	THE SWITCH SHALL BE STORED AT A TEMPERATURE OF 40±2°C AND A HUMIFITY OF 90% TO 96% FOR 96 HOURS . THEN THE SWITCH SHALL BE MAINTAINED AT STANDARD ATMOSPHERIC CONDITION FOR 1 HR FOR OTHER PROCEDURES BE MADE.	

	ITEM	TEST CONDITIONS	PERFORMANCE
4.5	SOLDERING CONDITIONS	<p>HAND SOLDERING: (1) DEVICE: SOLDER IRON A. 350°C MAX . 3SEC MAX B. 270°C MAX . 5SEC MAX (2) REFLOW SOLDERING</p> 	<p>THERE SHALL BE NO DEFORMATION OR CRACKS IN MOLDED PART.</p>

OPERATING FORCE	
260 ± 30gf	