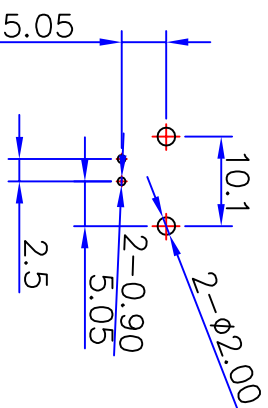
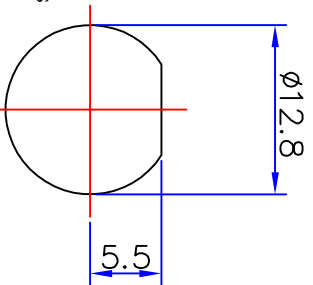
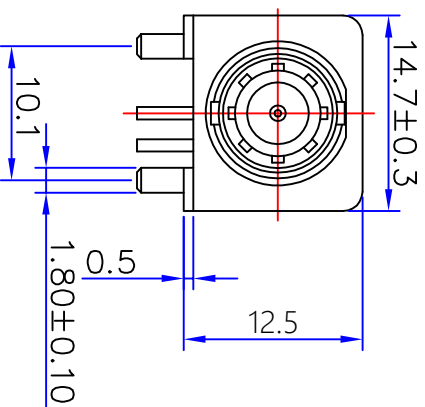
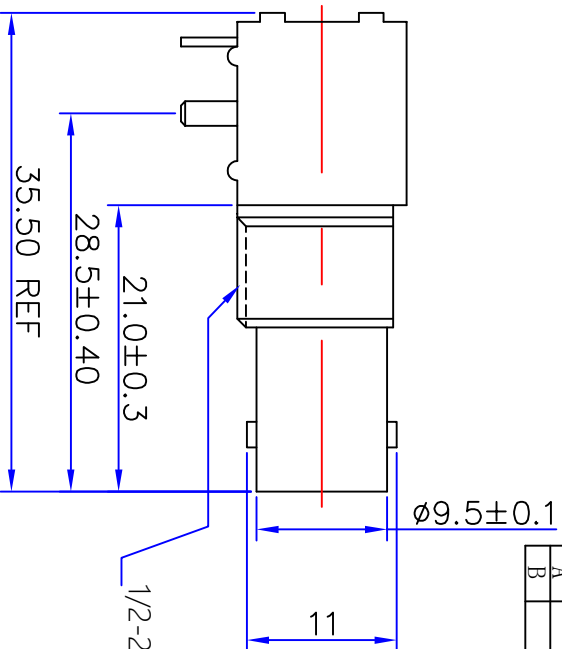
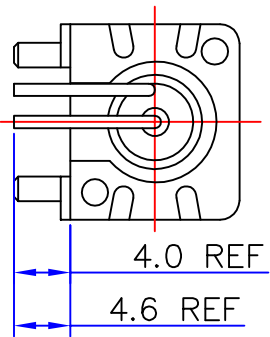




# Kinghelm®



### Specifications

Impedance: 50 Ohms  
 Frequency Range: DC~3G  
 VSWR: 1.3MAX  
 Working Voltage: 500V rms @ sea level  
 Insulation Resistance: 5000 Ohms min  
 Temperature Range: -55°C T0 +155°C  
 Relative Temperature: ≤95% (40° C±2° C)  
 Drawings products are in line with ROHS standards

1	Body	Zinc	NI:80-120u"						
2	Center contact	Brass	AU:1u"	NOTE:					
3	Lead	Iron	AU:1u"						
4	Fixed footrest	Iron	NI:80-120u"						
5	Insulator	POM	White	DRAWN					
6	Fixed mount	PBT	White	HE JUNJU	2012/11/10				
7	Washer	Brass	NI:80-120u"	CHECKED					
8	Hex nut	Brass	NI:80-120u"	LAI JIREN					
9									
10									
NO	Component Number	Material	Finish	APPROVALS	DATE	SCALE	UNIT	MM	1:1
A		B		ZHANG SONGJIAN	12/04/2012	SCALE			
D		E							
F		G							

Product NO.		DOSIN-801-0038		
REV	DESCRIPTION	DWN	DATE	APPROVEN
A	First Issue	JIM	2012/11/02	John kine
B	Resize	W.cheng	2020/05/05	John kine

SHENZHEN KINGHELM ELECTRONIC CO., LTD. **WWW.BDS666.COM**  
**KH-BNC50-3511** 0755-83044319  
 Name: **BMC WHITE JACK CONNECTOR (12.5MM)**

DATE: 2012/11/02  
 Product NO. DOSIN-801-0038  
 CAD FILE D:/company drawings/BD  
 SHEET: 1 OF 1