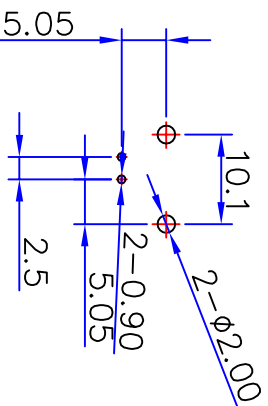
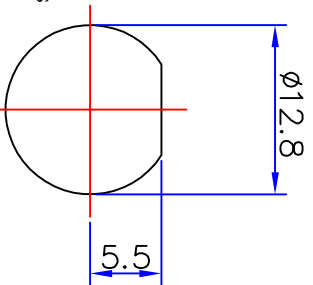
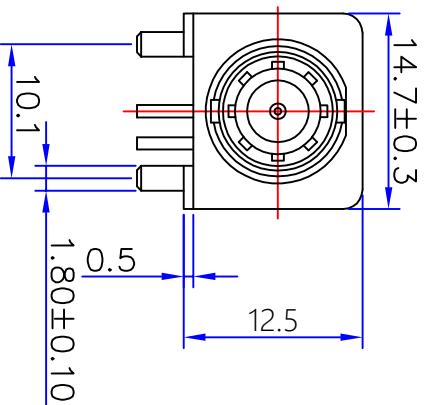
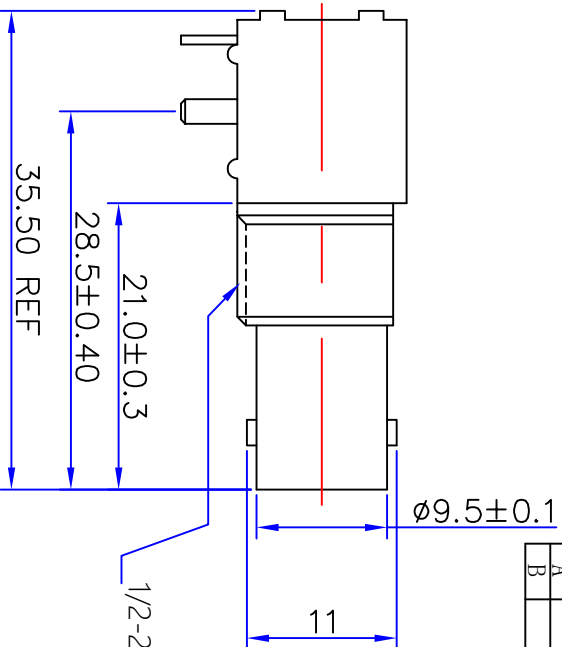
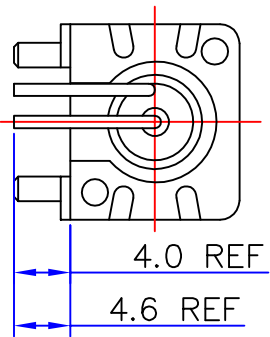




Kinghelm®



Specifications

Impedance: 75 Ohms
 Frequency Range: DC~3G
 VSWR: 1.3MAX
 Working Voltage: 500V rms @ sea level
 Insulation Resistance: 5000 Ohms min
 Temperature Range: -55°C T0 +155°C
 Relative Temperature: ≤95% (40° C±2° C)
 Drawings products are in line with ROHS standards

1	Body	Zinc	NI:80-120u"						
2	Center contact	Brass	AU:1u"	NOTE:					
3	Lead	Iron	AU:1u"						
4	Fixed footrest	Iron	NI:80-120u"						
5	Insulator	POM	White	DRAWN					
6	Fixed mount	PBT	White	HE JUNJU	2012/11/10				
7	Washer	Brass	NI:80-120u"	CHECKED					
8	Hex nut	Brass	NI:80-120u"	LAI JIREN					
9									
10									
NO	Component Number	Material	Finish	APPROVALS ZHANG songqiang	12/04/2012	SCALE			
A				King	D				
E									
F									
G									

Product NO.		DOSIN-801-0039		
REV	DESCRIPTION	DWN	DATE	APPROVEN
A	First Issue	JIM	2012/11/02	John kine
B	Resize	W.cheng	2020/05/05	John kine

SHENZHEN KINGHELM ELECTRONIC CO., LTD. **WWW.BDS666.COM**
KH-BNC75-3511 0755-83044319
 Name: **BMC WHITE JACK CONNECTOR (12.5MM)**

SIZE: A Product NO. DOSIN-801-0039
 Date/Time: 2012/11/02 CAD FILE: D/company drawings/BD SHEET: 1 OF 1
 REV: B