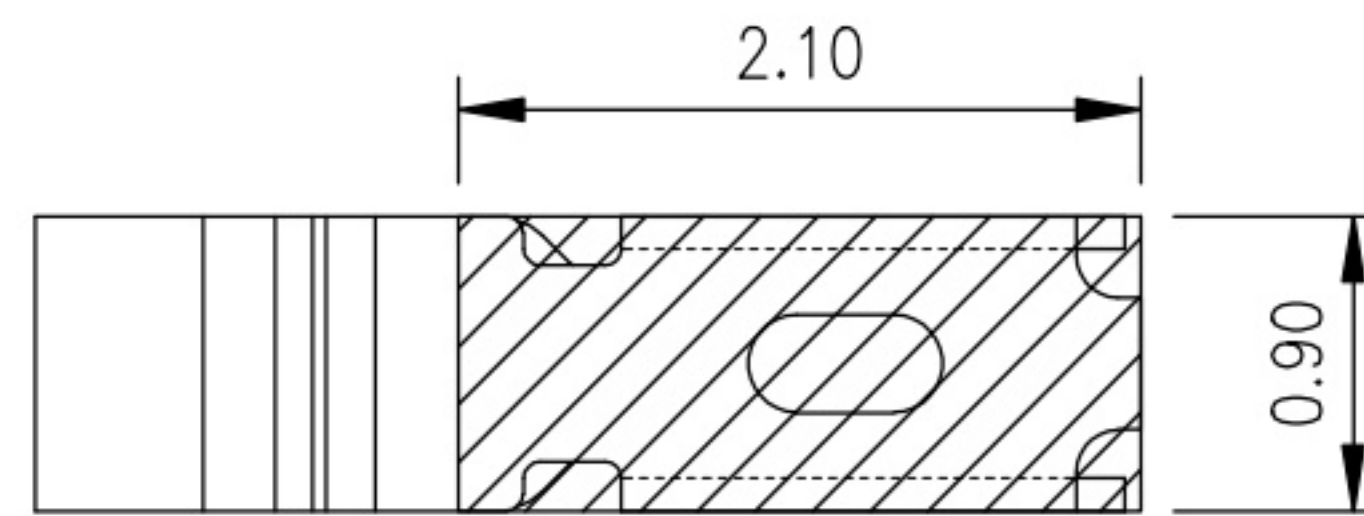
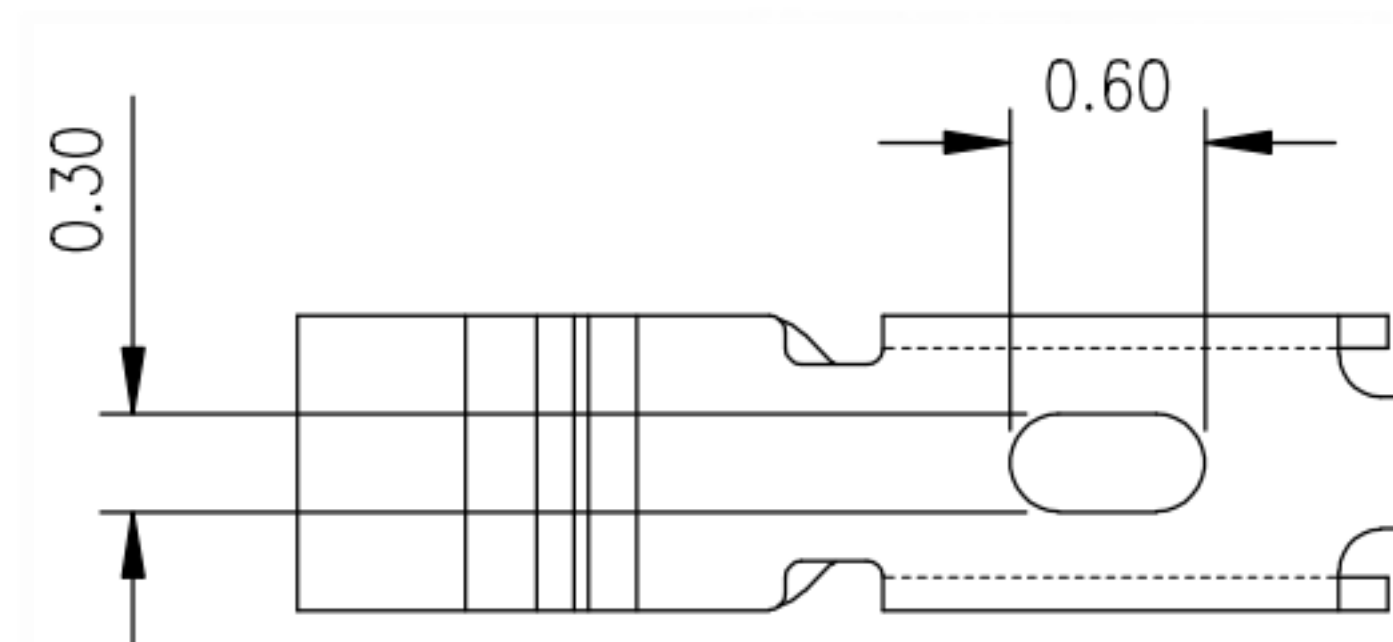
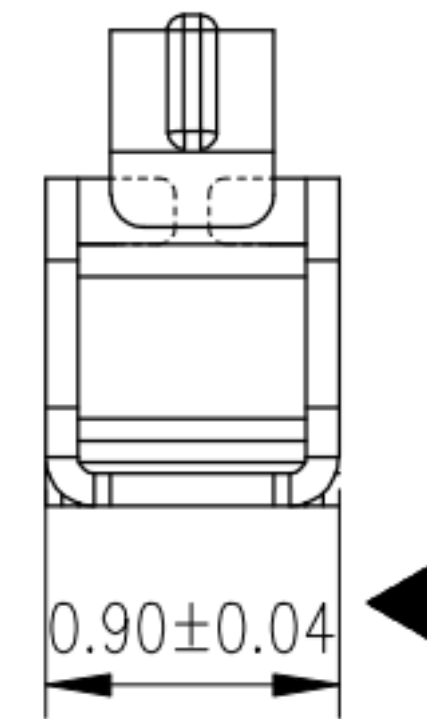
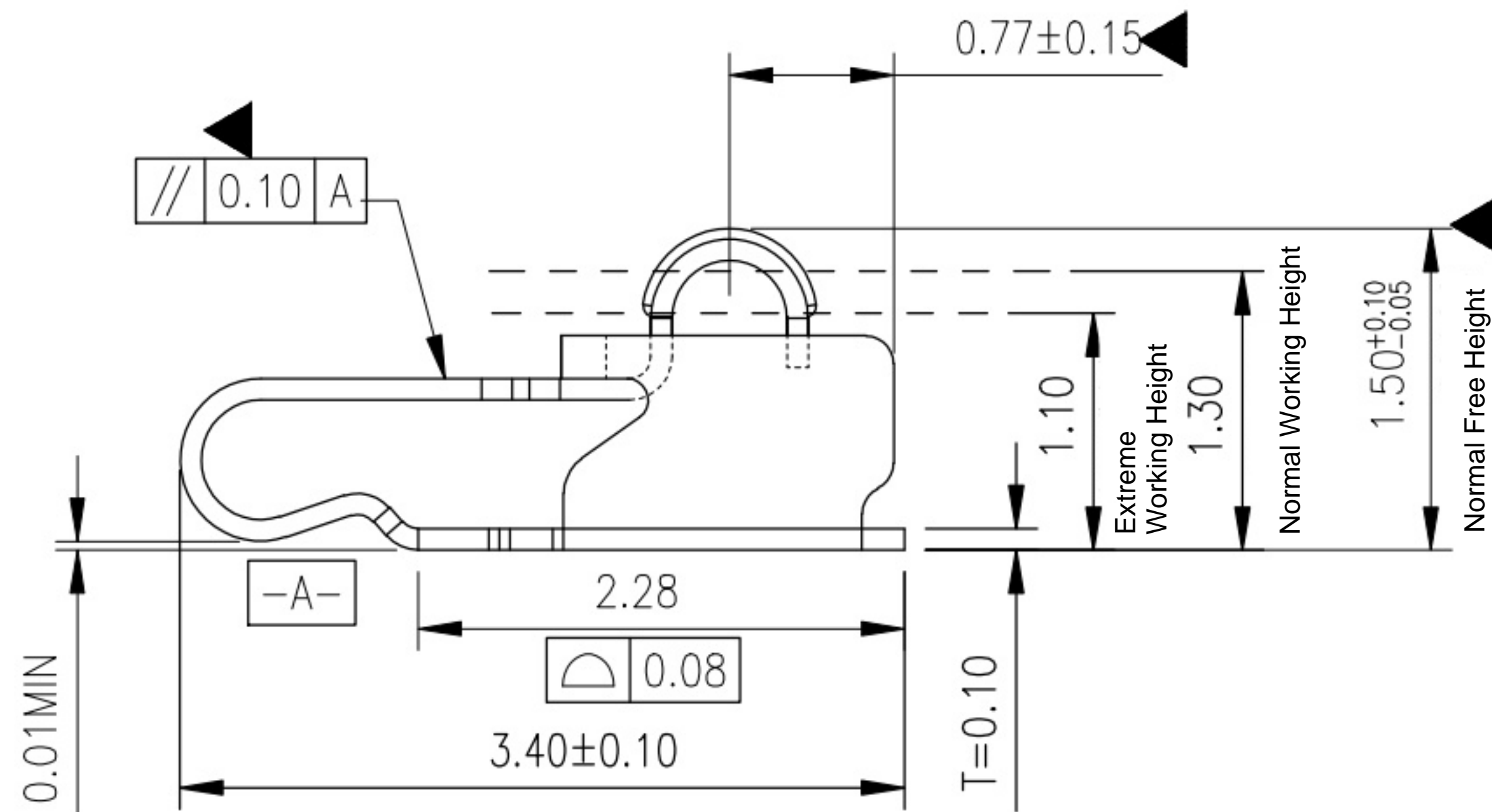
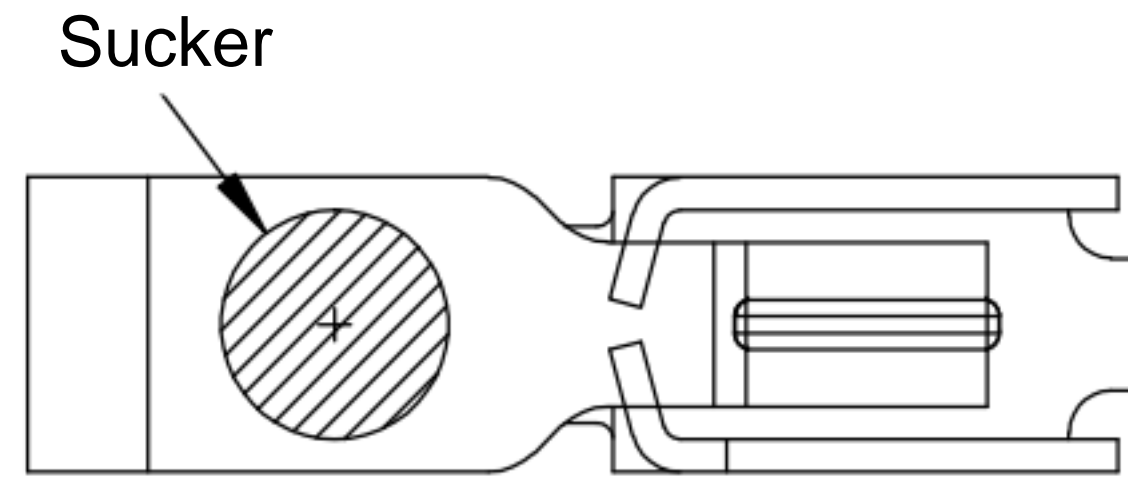


| Rev | ECN Number | Description | Date | Drawn | Checked | Approved |
|-----|------------|-------------|------|-------|---------|----------|
| | | | | | | |
| | | | | | | |

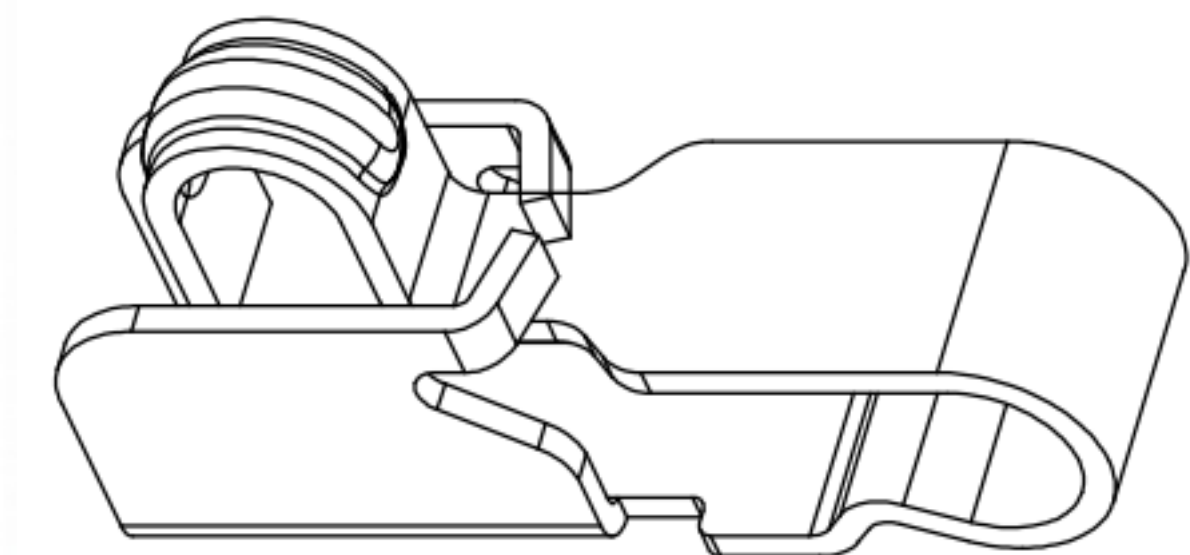
Technological Requirement

1. Material: Stainless steel SUS304, $T=0.08 \pm 0.005$.
2. The soldering and contact surfaces of the terminal must be free from burrs, maximum burr size of 0.03mm allowed on other parts.
3. Torsion: 45° per 1000mm, Arch: 5mm per 1000mm.
4. Dimensions marked with ' ' are critical for control and inspection.
5. Unmarked R MAX R0.13.
6. The plating must pass a 48-hour salt spray test.
7. Life test > 20,000 cycles, product spring force requirement between 60gf to 80gf.
8. Nickel base 50-80 μ m minimum, gold-plated in the welding area, gold-plated 1 μ m minimum in the contact area.



Welding Chassis Dimensions

Dimensional Tolerances ± 0.05



| | | | | | | | | |
|---|-------------------|----------------------|------------|----------|------|--------------------------------|---|-----------|
| Shenzhen Kinghelm Electronics Co.,Ltd www.kinghelm.net Model: KH-340915-TP 0755-83044319 | General Tolerance | | Scale: 1:1 | Drawn | Date | DWG. No. 681-0034A-1 | Diagram for Customer RF Antenna Spring, SMT L3.4*W0.9*H1.5 mm | REV. A |
| | XX. ± 0.50 | X.° $\pm 2.0^\circ$ | | | | | | Unit: mm |
| | X. ± 0.35 | .X° $\pm 1.0^\circ$ | Size: A4 | Approved | Date | | | |
| | .X ± 0.25 | .XX° $\pm 0.5^\circ$ | | | | | | |