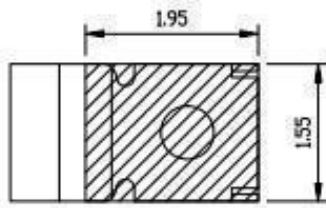
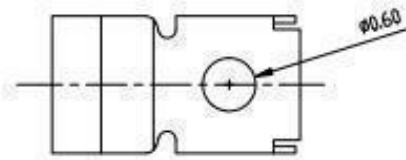
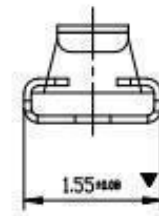
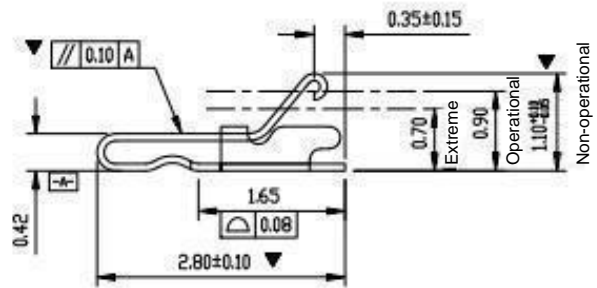
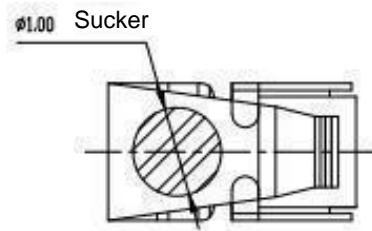


REV.	ECN. No.	Description	Date	Drawn	Check	Approved



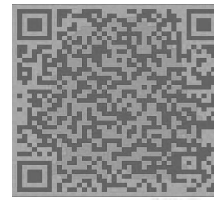
Welding Chassis Dimensions
Dimensional Tolerances ± 0.05



Technical Requirement

1. Material: Stainless steel SUS304, T=0.08 ± 0.005
2. The soldering and contact surfaces of the terminal must be free from burrs, maximum burr size of 0.03mm allowed on other parts.
3. Torsion: 45° per 1000mm, Arch: 5mm per 1000mm.
4. Dimensions marked with ' ' are critical for control and inspection.
5. Unmarked R MAX R0.13.
6. The plating must pass a 48-hour salt spray test.
7. Life test > 20,000 cycles, product spring force requirement between 60gf to 80gf.
8. Nickel base 50-80µm minimum, gold-plated in the welding area, gold-plated 3µm minimum in the contact area.

Technical Support



General Tolerance		Scale: 1:1	Drawn	Date	DWG. No.	Model: KH-281511-TP	REV.
XX. ± 0.50		Unit: mm	Check	Date	681-0026B-1		A
X. ± 0.35	X.° ± 2.0°		Approve	Date	Parts No. (Intended Use) L2.8*W1.55*H1.1		Sheet 1/1
.X ± 0.25	.X° ± 1.0°	Size: A4					
.XX ± 0.15	.XX° ± 0.5°						