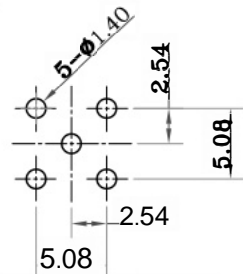
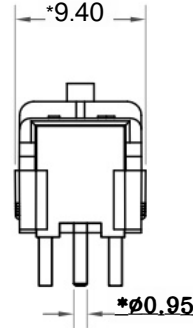
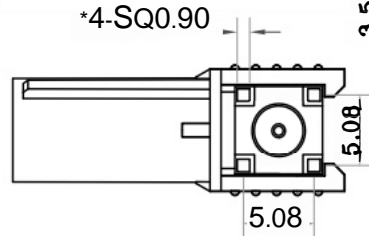
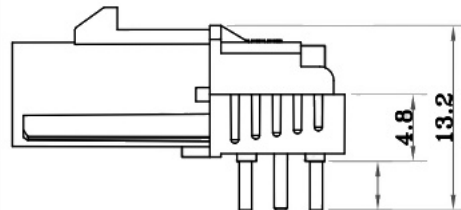
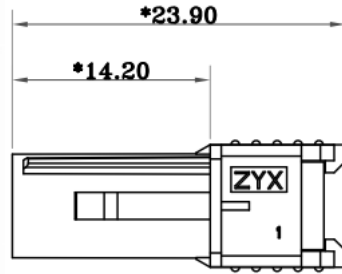
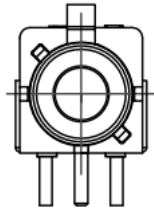


*Critical Inspection Dimensions

(RoHS)

Kinghelm®



Recommended PCB mounting holes

Note.

- Frequency Range: 0-4GHz
- Characteristic Impedance: 50 (Nominal)
- VSWR: 1:1.3 MAX
- Insertion Loss: -0.3dB MAX
- Mating Cycles: 25 Min
- Environmental Temperature Stability: -40°C to 105°C
- High Voltage Test: 1000VDC
- This product is suitable for reflow soldering.

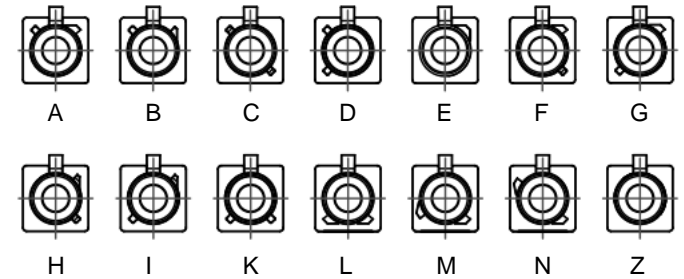
BOM:

No.	Item	Part Number	Material	Qty.	Plating
6	Plastic Shell	FK1.B.RM-208	PA66	1	Shape Code
5	Center Pin		Brass	1	Gold
4	Rubber Core		PTFE	1	
3	Rubber Core		PTFE	1	
2	Circular Body		Brass	1	Nickel
1	Square Body		Brass	1	Silver

General Tolerance:
 .X : ±0.3
 .XX : ±0.2
 .XXX : ±0.1
 Angle Tolerance: ±1°

Changed

Version	Date	Content and Instructions	ECR No.	Sig.



Z	Aquamarine/No.5021	FK1-Z-RM-208
N	Spruce Green/No.6019	FK1-N-RM-208
M	Light Orange/No.2003	FK1-M-RM-208
L	Crimson Red/No.3002	FK1-L-RM-208
K	Curry Brown/No.1027	FK1-K-RM-208
I	Beige/No.1001	FK1-I-RM-208
H	Pink/No.4003	FK1-H-RM-208
G	Grey/No.7031	FK1-G-RM-208
F	Brown/No.8011	FK1-F-RM-208
E	Green/No.6002	FK1-E-RM-208
D	Purple/No.4004	FK1-D-RM-208
C	Blue/No.5005	FK1-C-RM-208
B	White/No.9001	FK1-B-RM-208
A	Black/No.9005	FK1-A-RM-208
Code	Colour Code	Product Model

FK1-X-RM-208

A,B,C,D~Z

Engineering Diagram

Model No.	KH-FK1-B-RM-208	
Name	FK90° Long Bend Terminal	
SPE.	Scale	1:1
Part No.	Unit	mm
Date	27/5/2016	Page 1/1

Shenzhen Kinghelm Electronics Co.,Ltd

DRW.	Lance
APV.	
CHK.	

