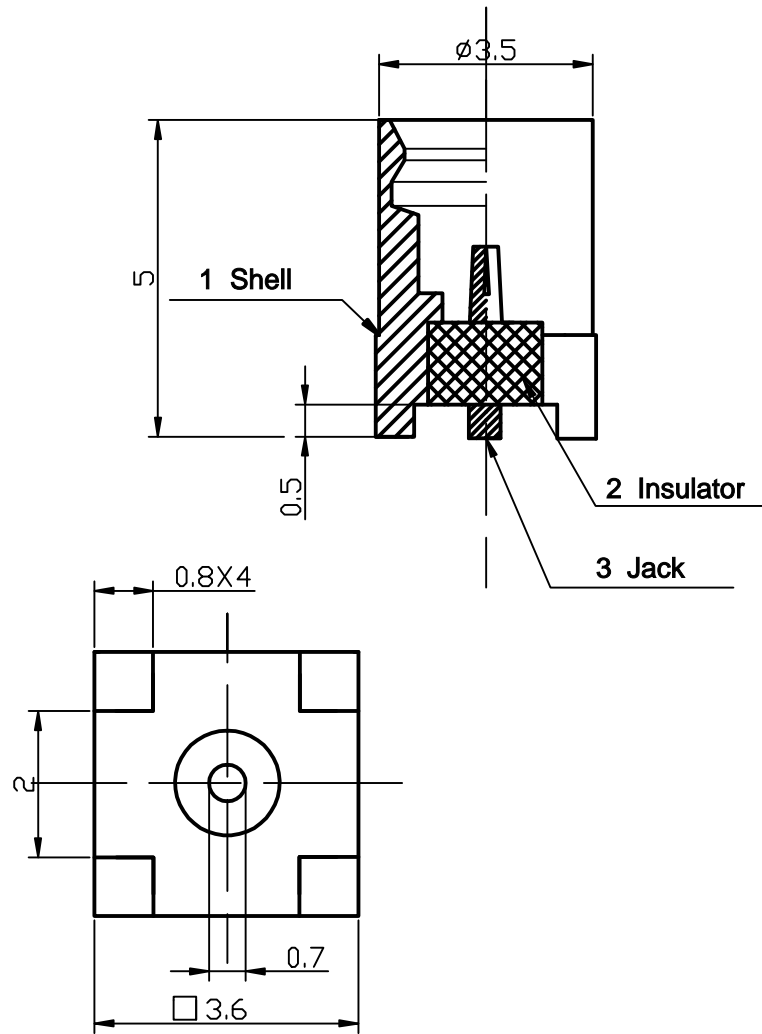


Revise			
No.	Ver	Revise Content	Date
	E1		2020.07.11



Specifications:

- Temperature Range: -40°C~125°C
- Standard Impedance: 50
- Frequency Range: 0~6Ghz
- Medium Pressure Resistance: 750V
- Contact Resistance: Inner Conductor 5m ,
Outer Conductor 2.5m
- Voltage Standing-Wave Ratio: ≤1.2(0~3Ghz)
- Mark * is the key size
- Body brass, gold-plated 48h salt spray, the surface coating requirements of bright, uniform, no oxidation, rust spots, and other bad phenomena

⑦	1				
⑥	1				
⑤	1				
④	1				
③	1	Inner Conductor	hPB59-1	Gilding	2U
②	1	Insulator	PTFE		
①	1	Shell	c3604	Gilding	1U
No.	PCS	Part Name	Material	Cladding	Notes

Former Outline Drawing Number		Date	Signature		Shenzhen Kinghelm Electronics Co., Ltd		www.kinghelm.net				
Outline Drawing Number		Sign	Amount	Change Order Number	Signature	Date	KH-MMCX-KE-STM		0755-83044319		
Design						Undeclared Tolerance(mm)		Stage	Sign	Quality	Scale
Checked						X.	±0.5				5:1
Technology						.X	±0.1				
Standardization						.XX	±0.05				
Approve						X°	±1°	Page 1		1 Page	
Layout(1)						Version: E1				Size A4	