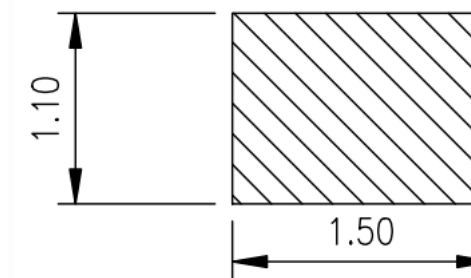
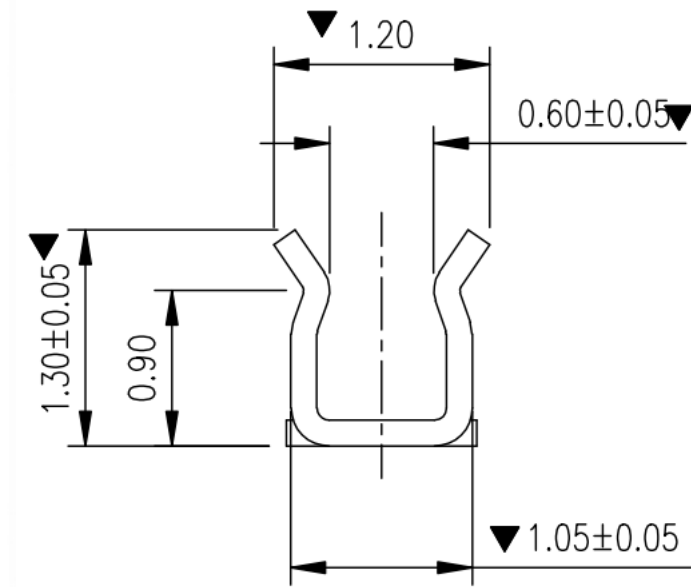
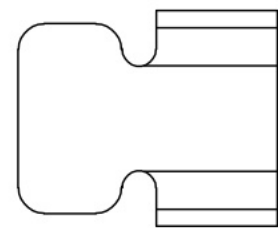
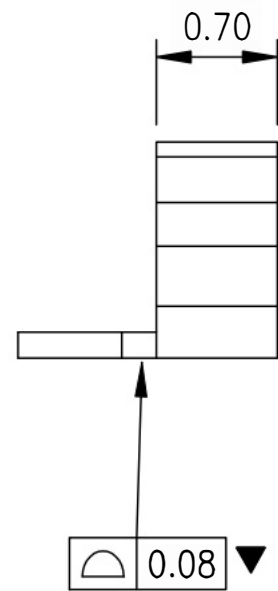
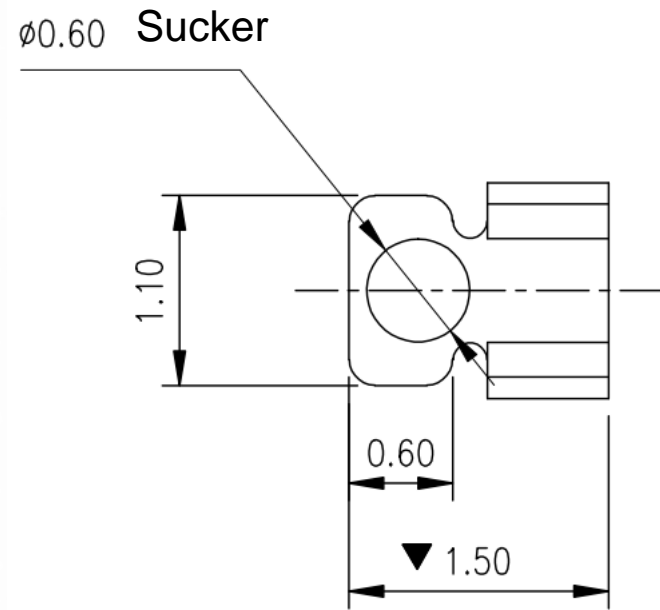


Rev	ECN Number	Description	Date	Drawn	Checked	Approved

Technical Requirement

1. Material: Stainless steel SUS301, T=0.15 ± 0.005.
2. The soldering and contact surfaces of the terminal must be free from burrs, maximum burr size of 0.03mm allowed on other parts.
3. Torsion: 45° per 1000mm, Arch: 5mm per 1000mm.
4. Dimensions marked with ' ' are critical for control and inspection.
5. Unmarked R MAX R0.13.
6. The plating must pass a 24-hour salt spray test.
7. Life test > 20,000 cycles, product spring force requirement between 60gf to 80gf.
8. Nickel base 50-80 U" min; outer surface of the product is tinned around 80-100U" min.



Welding Chassis Dimensions
Dimensional Tolerances ± 0.05

Diagram for Customer RF Cable(∅0.81) Can Clip L1.5*W1.20*H1.30	General Tolerance		Scale: 1:1	Drawn	Date	DWG. No. 681-0074C-01	Shenzhen Kinghelm Electronics Co.,Ltd	www.kinghelm.net	REV. A
	XX. ± 0.50								
	X. ± 0.35	X.° ± 2.0°	Unit: mm	Check	Date	Parts No. (Intended Use)	KH-PBJ-151213	0755-28190160	SHEET 1/2
	.X ± 0.25	.X° ± 1.0°	Size: A4	Approved	Date	0074C1			