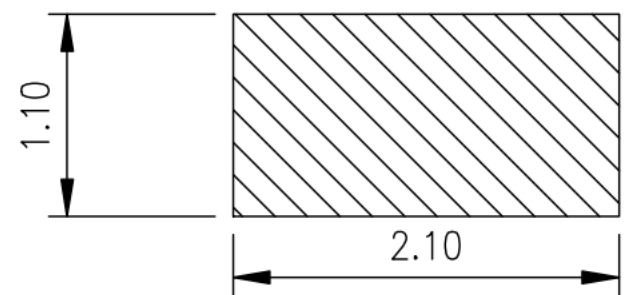
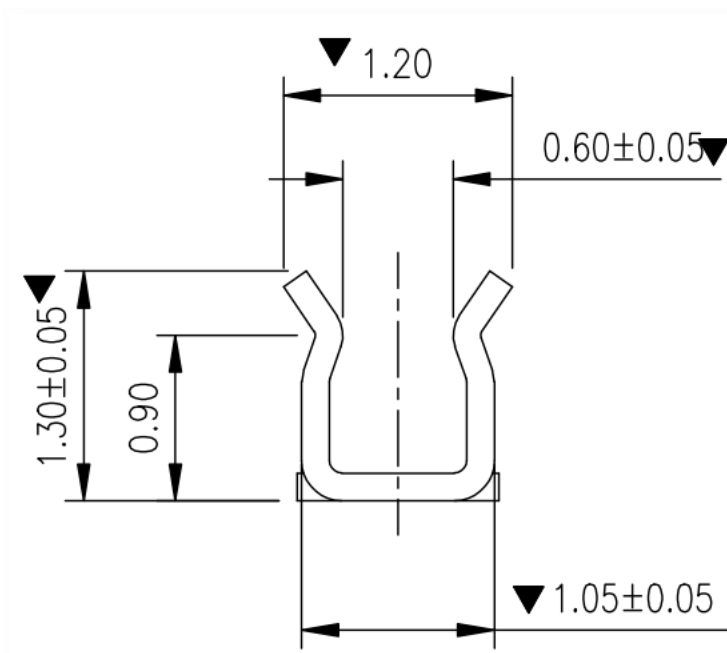
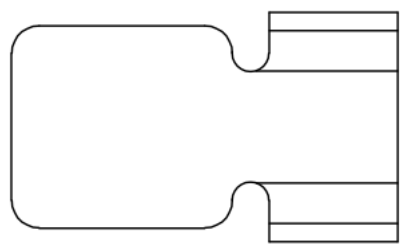
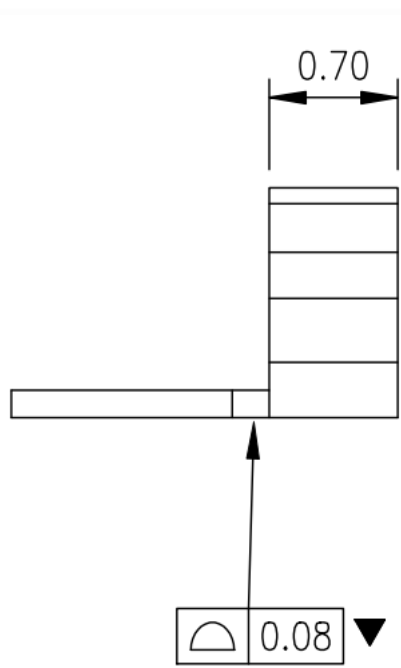
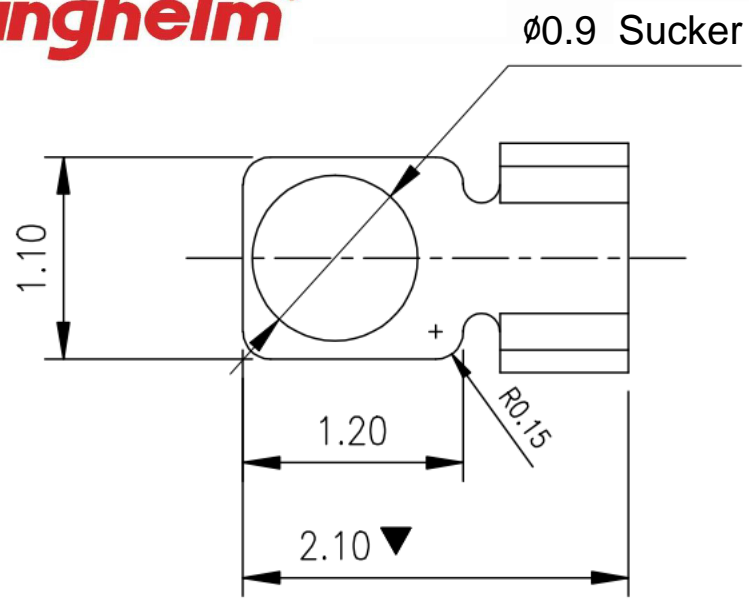
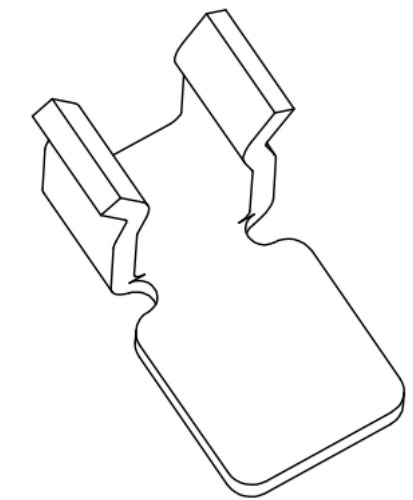


**Kinghelm®**

Rev.	ECN Number	Description	Date	Drawn	Checked	Approved



**Welding Chassis Dimensions**  
Dimensional Tolerances ± 0.05



**3-Dimensional Diagram**

### Technical Requirement

1. Material: Stainless steel SUS301, T=0.15 ± 0.005.
- ▼ 2. The soldering and contact surfaces of the terminal must be free from burrs, maximum burr size of 0.03mm allowed on other parts.
3. Torsion: 45° per 1000mm, Arch: 5mm per 1000mm.
4. Dimensions marked with ▼ are critical for control and inspection.
5. Unmarked R MAX R0.13.
6. The plating must pass a 24-hour salt spray test.
7. Life test > 20,000 cycles, product spring force requirement between 60gf to 80gf.
8. Nickel base 50-80 U" min; outer surface of the product is tinned around 80-100U" min.

Diagram for Customer  
RF Cable(φ0.81) Can Clip  
L1.5\*W1.20\*H1.30

General Tolerance	
XX. ± 0.50	
X. ± 0.35	X.° ± 2.0°
.X ± 0.25	.X° ± 1.0°
.XX ± 0.15	.XX° ± 0.5°

Scale: 1:1  
Unit: mm  
Size: A4

Drawn  
Check  
Approved  
Date  
Date  
Date

DWG. No.  
681-0074B-01  
Parts No. (Intended Use)  
0074B1

Shenzhen Kinghelm  
Electronics Co.,Ltd  
KH-PBJ-211213

www.kinghelm.net  
0755-28190160

REV.  
A  
SHEET  
1/2