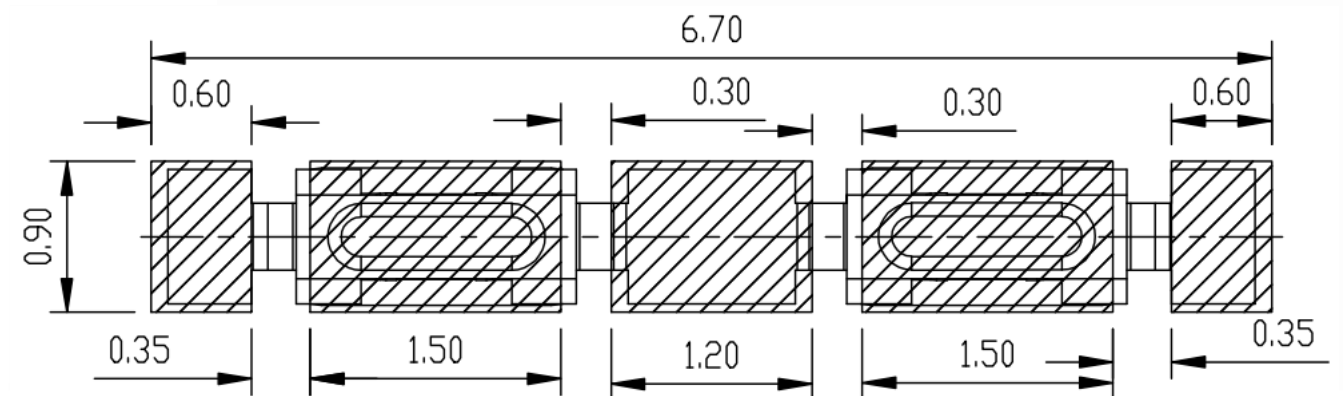
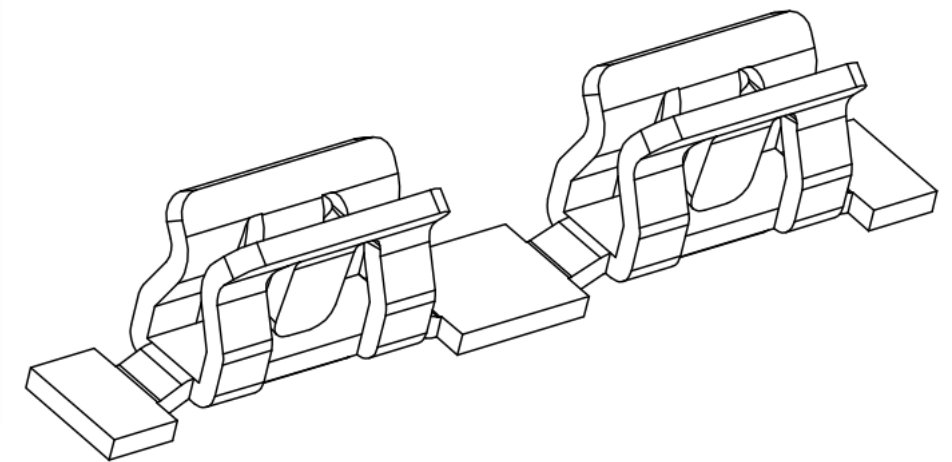
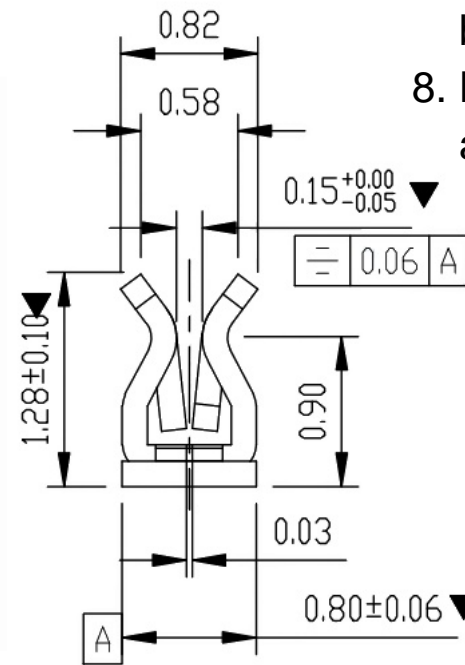
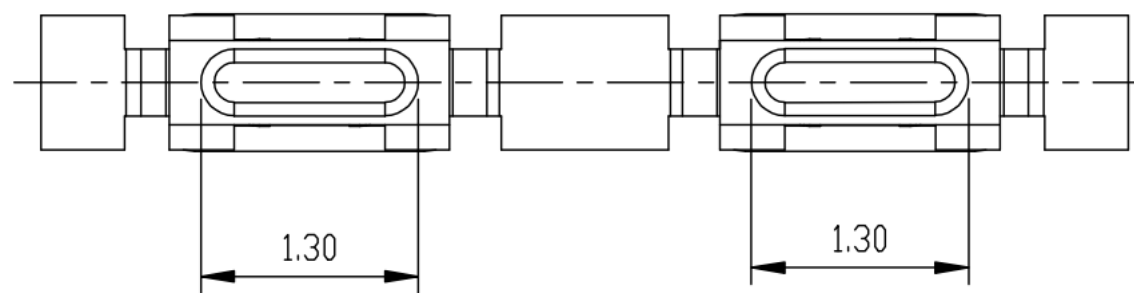
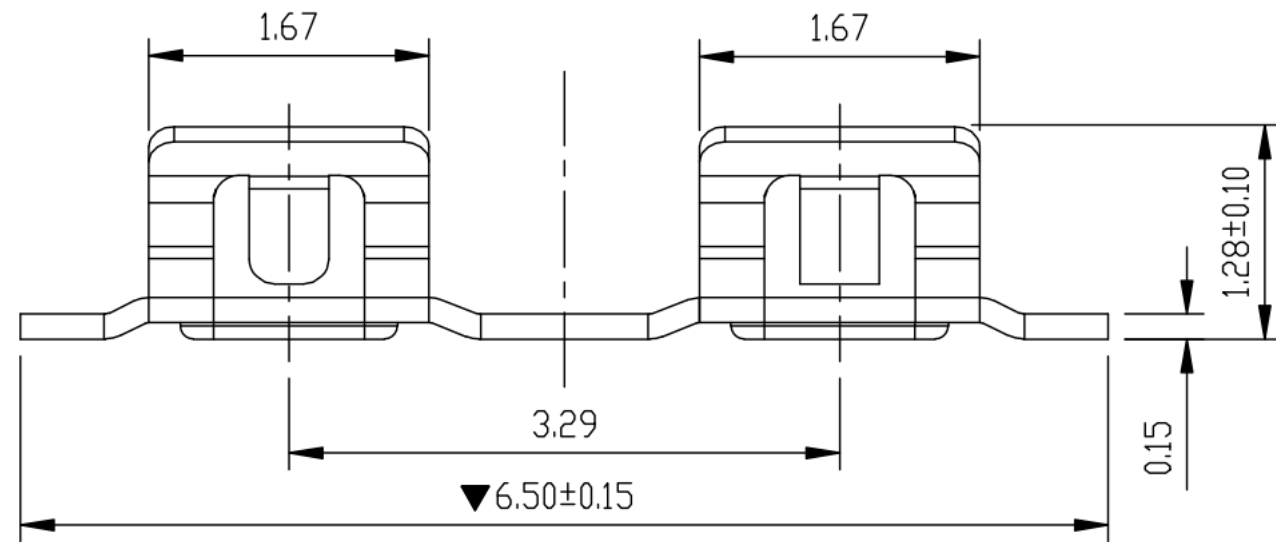
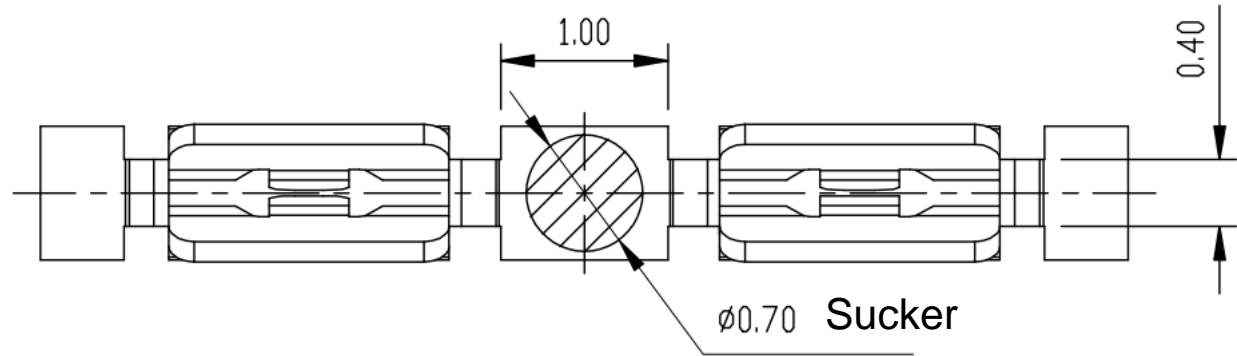


Rev	ECN Number	Description	Date	Drawn	Checked	Approved

### Technical Specification

1. Material: Stainless steel SUS304,  $T=0.10 \pm 0.005$ .
- ▼ 2. The soldering and contact surfaces of the terminal must be free from burrs, maximum burr size of 0.03mm allowed on other parts.
3. Torsion:  $45^\circ$  per 1000mm, Arch: 5mm per 1000mm.
4. Dimensions marked with ▼ are critical for control and inspection.
5. Unmarked R MAX R0.13.
6. The plating must pass a 24-hour salt spray test.
7. Life test > 20, 000 cycles, product spring force requirement between 60gf to 80gf.
8. Nickel base 50-80 U" min; outer surface of the product is tinned around 80-100U" min.



**Welding Chassis Dimensions**  
Dimensional Tolerances  $\pm 0.05$

Diagram for Customer Shield (T0.15) Can Clip 6.5*0.8*1.28mm	General Tolerance		Scale: 1:1	Drawn	Date	DWG. No. 681-0071A-1	Shenzhen Kinghelm Electronics Co.,Ltd	www.kinghelm.net	REV. A
	XX. $\pm 0.50$								
	X. $\pm 0.35$	$X^\circ \pm 2.0^\circ$	Size: A4	Approved	Date				
	.X $\pm 0.25$	$.X^\circ \pm 1.0^\circ$							
	.XX $\pm 0.15$	$.XX^\circ \pm 0.5^\circ$							Sheet 1/2