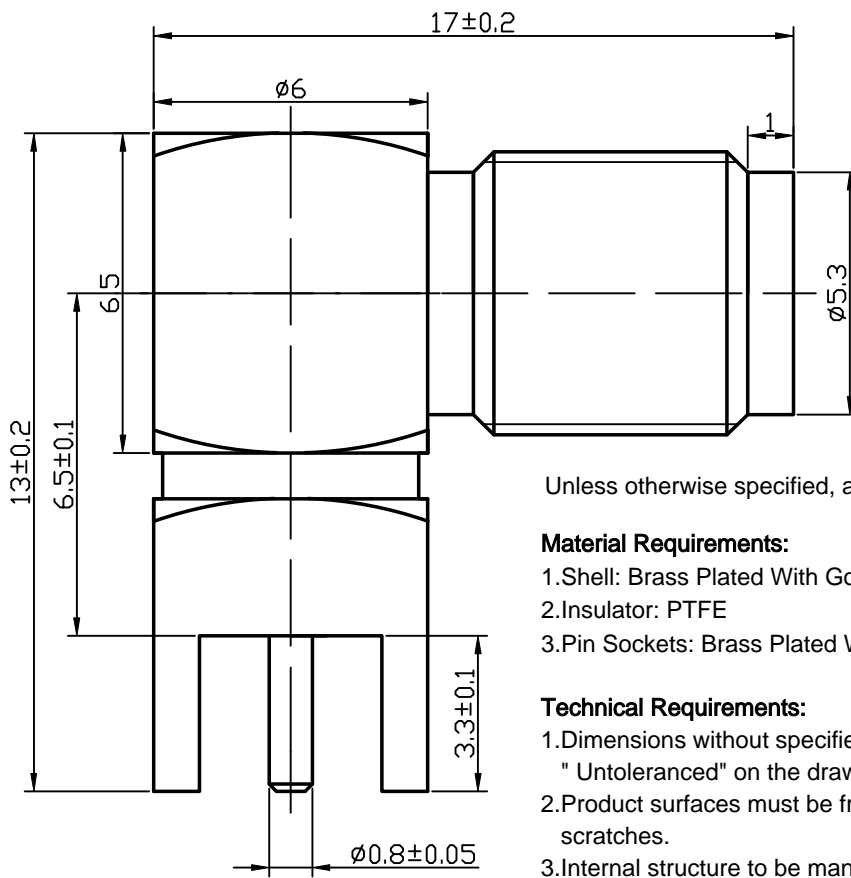
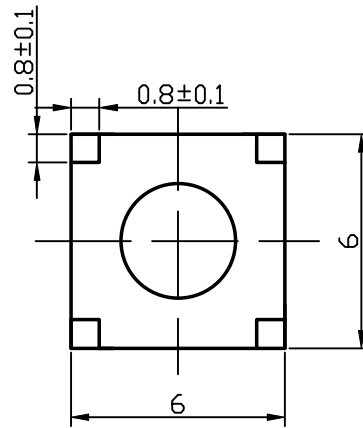


# Kinghelm®



Unless otherwise specified, all burrs must be removed.

**Material Requirements:**

1. Shell: Brass Plated With Gold (HPb59-1)
2. Insulator: PTFE
3. Pin Sockets: Brass Plated With Gold (HPb59-1)

**Technical Requirements:**

1. Dimensions without specified tolerances to follow "Untoleranced" on the drawing.
2. Product surfaces must be free from stains and scratches.
3. Internal structure to be manufactured according to 50 standards.
4. Materials must comply with environmental protection requirements.

Old Drawing Number				Shenzhen Kinghelm Electronics Co., Ltd		www.kinghelm.net					
				KH-SMA-KWE-W		0755-28190160					
		Remark	Amt.	Change Document Number	Sign	Date					
Drawing Number		Design				Assembly Drawing		Stage	Remark	Quality	Scale
GW-LJQ292		Audit									5:1
		Technology						Page 1		Total 1 Page	
Date	Sign							SMA-KWE			
		Standardization									
		Approve									
Format (1)			Grafting:			Drawing:			A4 Size		