



Shenzhen Kinghelm Electronics Co.,Ltd

Product Performance and Specification Acceptance Document

Product Name: KHINB(/900/1800/2170/2700)C3600-03-A/3- Sucker

Sample Colour: Black

Sample Type: Sucker External Antenna

Customer: _____

Prototype sample Other

Supplier: Shenzhen Kinghelm Electronics Co., Ltd

Production	Structure	Quality	Approval	Date
Hui Li	Wenhui Liu	Junju He	Qianhong Liu	

Customer:

Department	Confirmation	Date	Status	Sig./Seal
Electronic				
Structure				
Quality				
Project				

Confidentiality Agreement

Shenzhen Kinghelm Electronics Co., Ltd possesses proprietary information provided in the materials. Disclosure to any individual or company is prohibited without prior written consent from Shenzhen Kinghelm Electronics Co., Ltd

Contents

1. Product Technical Specifications
2. Picture
3. Product Specification Diagram
4. Mechanical Structure
5. Durability
6. V.S.W.R
7. Smith Chart
8. RF Radiation Pattern

1. Product Technical Specifications

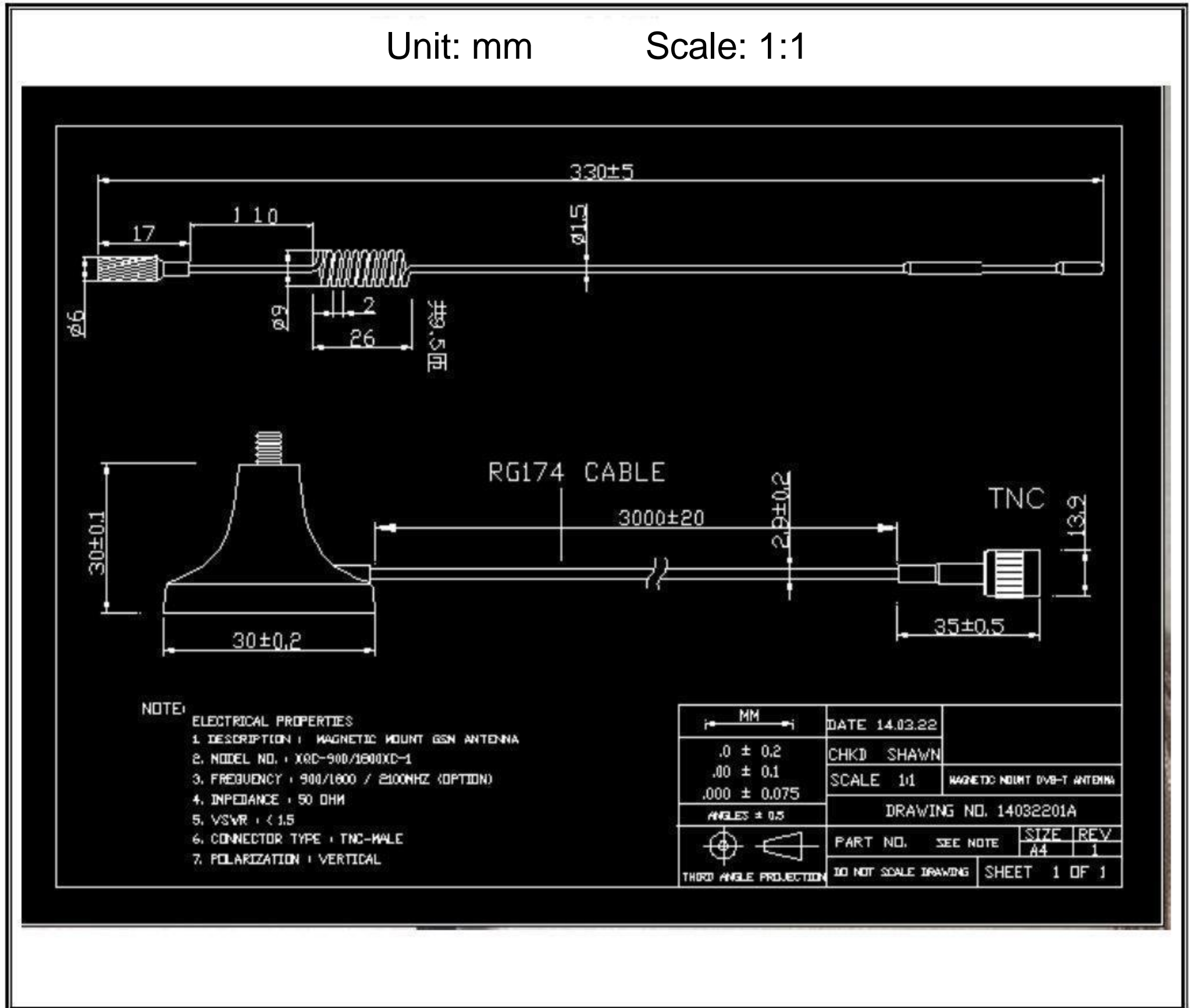
Electrical Specifications	
Frequency Range (Mhz)	900/1800/2170/2700
Bandwidth (Mhz)	NA
Input Impedence ()	50
V.S.W.R	2
Gain (dBi)	12
Maximum Input Power (W)	5
Mechanical Specifications	
Antenna Length (mm)	360
Connect Type	Inpex I. male
Radome Colour	Black
Weight (g)	70

2. Picture



Inpex I. Terminal Blocks (Customizable Connectors)

3. Product Specification Diagram



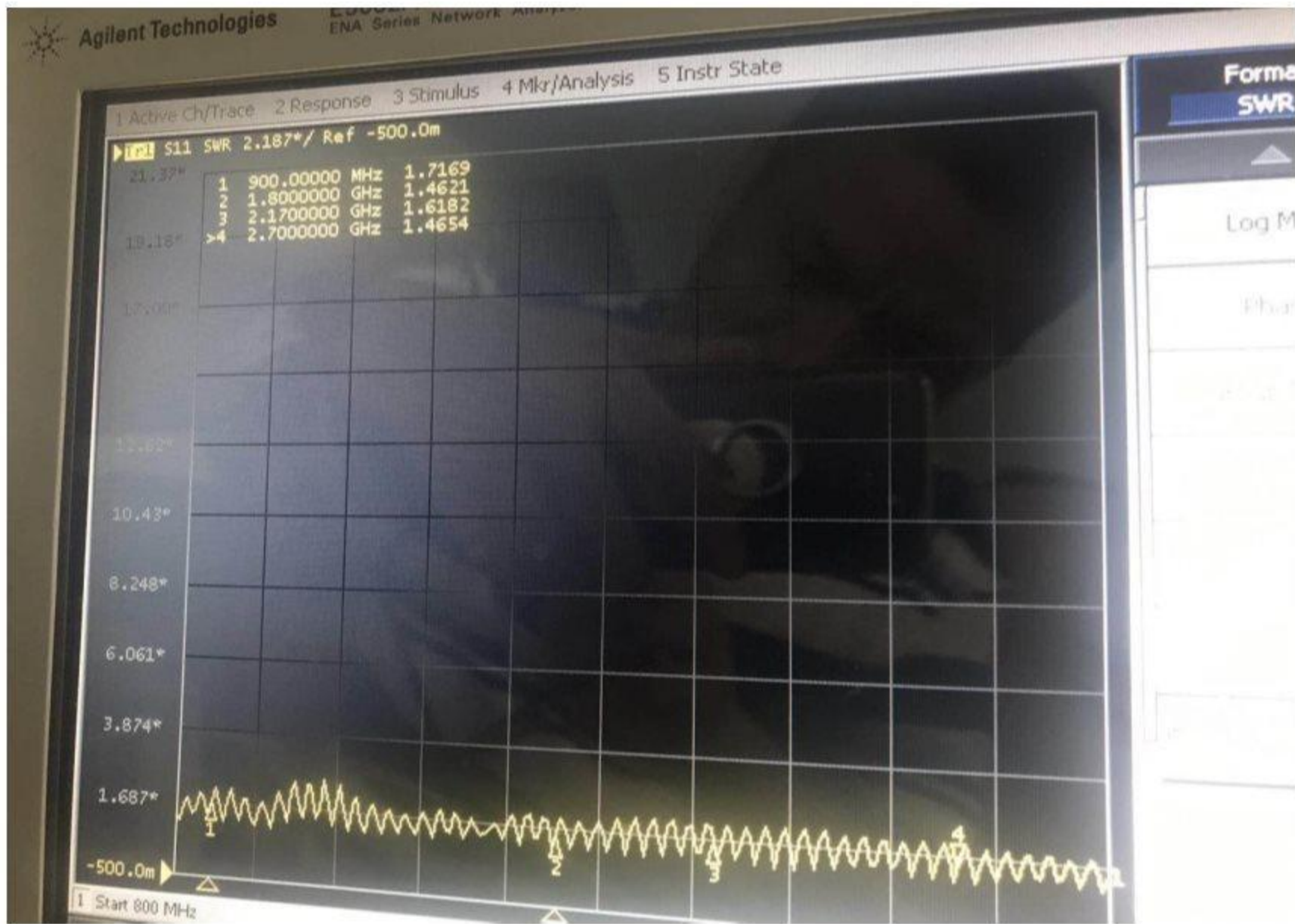
4. Mechanical Structure

1	Bending Test	Put load 120g to 30cm cable from the end of the connector, fixed joints, swaying test at an angle of 60 degrees test features after 1,000 times.	No visible damage after 1,000 time test
2	Strengthening Test	Apply a static load of 15 pounds to the bottom of the cable termination continuously for one minute.	No visible damage after test.
3	Vibration Test	Vibrate along the X-axis with a vibration frequency of 33.30 Hz/sec and an amplitude of 1.10 mm for 120 minutes, along the Y-axis for 120 minutes, and along the Z-axis for 240 minutes.	No visible damage after test.

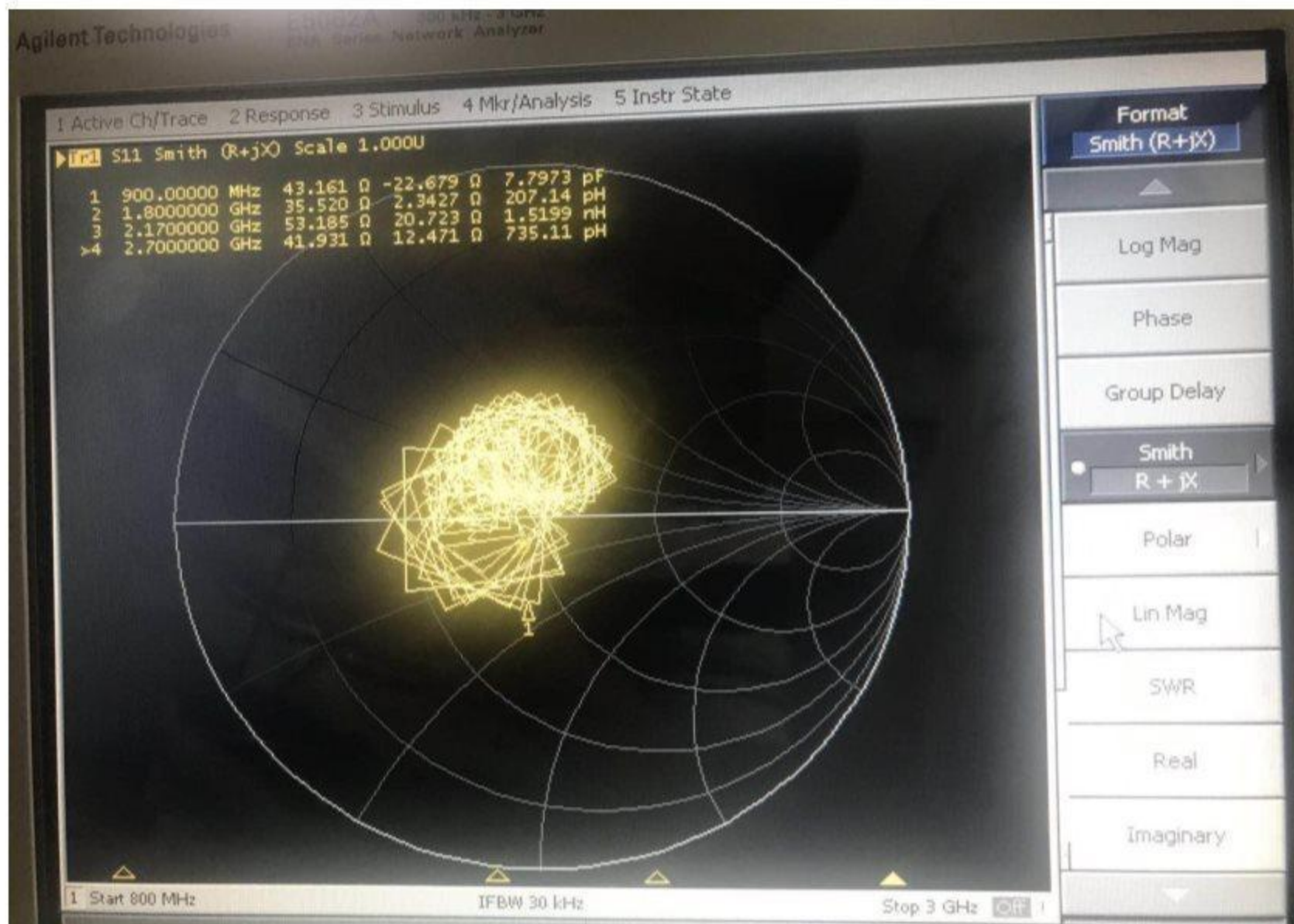
5. Durability

1	Salted Spary Test	<p>Salted Spray Test: According to GB1266-86 standard Distilled Water: Distilled once pH 6.5-7 Spray Rate: 1.4 me80 cm²/h Compressed Air Pressure: 1Kgf/cm² Test Relative Humidity: 98° Temperature: 45-47°C Pressure Temperature: 35°C Test Duration: 24 hours</p>	<p>All specifications vary within ±30% of their initial values.</p>
2	Heating Test	<p>Place in an environment at 85±2°C for 24 hours, then test after being placed in normal conditions for 30 minutes.</p>	
3	Humidity Test	<p>Place in an environment at 40±2°C and 90-95% RH for 24 hours, then test after being placed in normal conditions for 30 minutes.</p>	
4	Low Temperature Test	<p>Place in an environment at -40±2°C for 24 hours, then test after being placed in normal conditions for 30 minutes.</p>	

6. V.S.W.R

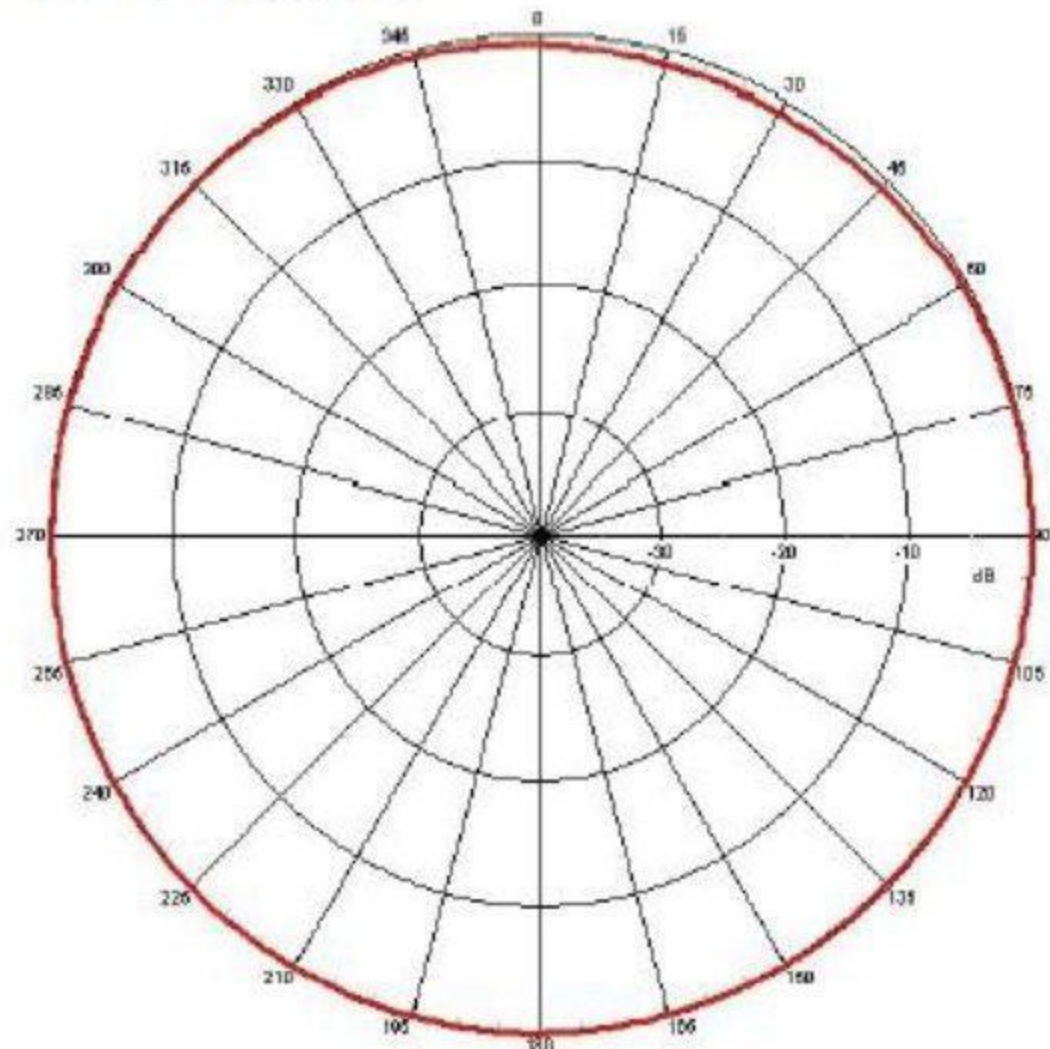


7. Smith Chart



8. RF Radiation Pattern

H-Plane



E-Plane

