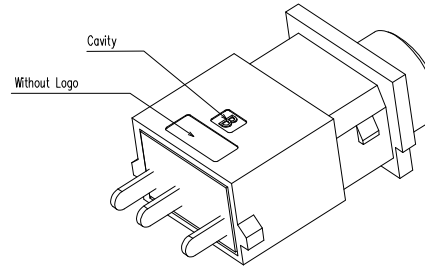
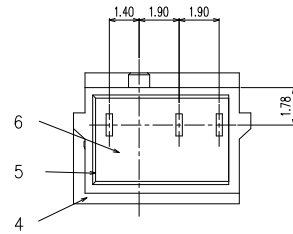
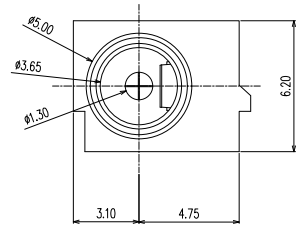


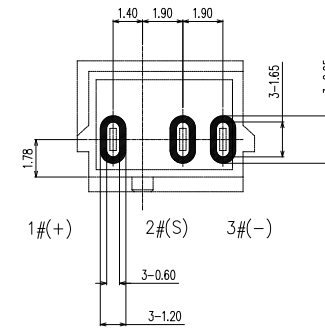
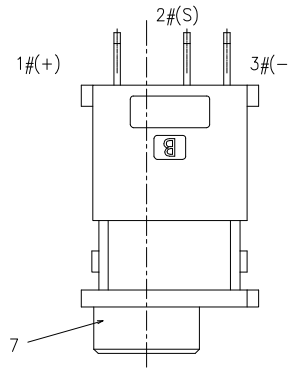
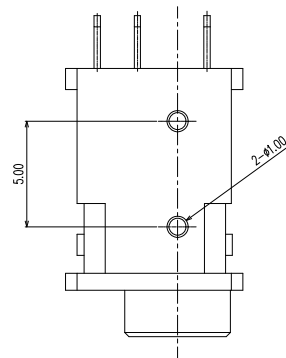
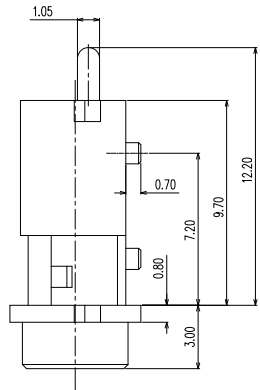
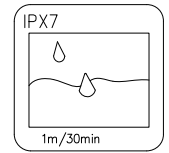
ZONE	ECN.N.O.	DESCRIPTION	DRAWING	DATE
A		INITIAL	林生财	2020.02.18



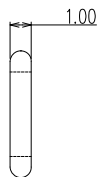
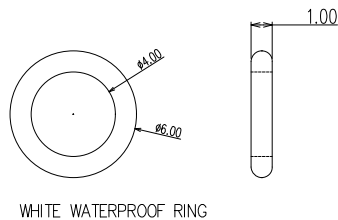
3D VIEW

NOTES

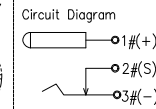
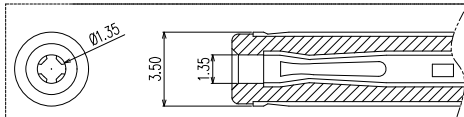
- CURRENT RATING: 24V & 3A MAX.
- CONTACT RESISTANCE: 50mΩ MAX.
- INSULATION RESISTANCE: 100MΩ MIN.
- DIELECTRIC WITHSTANDING: 500V AC MIN.
- DURABILITY: 5000 CYCLES MIN.
- CONNECTOR MATING FORCES: 3N MIN.
- CONNECTOR UNMATING FORCES: 35N MAX.
- OPERATING TEMPERATURE: -25°C TO +85°C.



PCB LAYOUT (TOP VIEW)
TOLERANCE: ±0.05



Not to install the waterproof ring shipment



NO.	DESCRIPTION	MATERIAL	REMARKS	QTY
7	WATERPROOF RING	SILICONE;	COLOR WHITE	1
6	GLUE	EPOXY;	COLOR BLACK	1
5	BACK COVER	HIGH TEMPERATURE;	COLOR BLACK	1
4	HOUSING	HIGH TEMPERATURE;	COLOR BLACK	1
3	TERMINAL 3#	COPPER ALLOY;	NICKEL UNDERPLATING OVERALL, Au PLATING ON SOLDER AREA	1
2	TERMINAL 2#	COPPER ALLOY;	NICKEL UNDERPLATING OVERALL, Au PLATING ON THE WHOLE	1
1	CENTER PIN	COPPER ALLOY;	NICKEL UNDERPLATING OVERALL, Au PLATING ON SOLDER AREA	1

深圳市金航标电子有限公司

WWW.KINGHELM.COM.CN

DRAWING: 林生财 DATE: 2020.02.18 SCALE: 1:1

0755-28190160

CHECK: 李宏鑫 DATE: 2020.02.18 MATERIAL: *

SHENZHEN KINGHELM ELECTRON CO.,LTD

TOLERANCE UNLESS	0.0±0.3	0.1±2'	UNIT: mm	
OTHERWISE SPECIFIED:	0.00±0.2	0.0'±1'		
	0.000±0.1	0.00'±0.5'		

APPROVAL: 杨进宝 DATE: 2020.02.18 DWG. NO.

PAPI NAME: 01.3 DC WATERPROOF POWER JACK

DRAWING NO. KH-FSDC-30002-03DBAP-AO SHEET 1/1