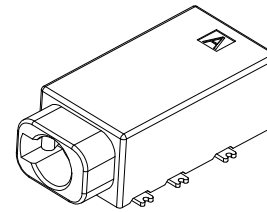
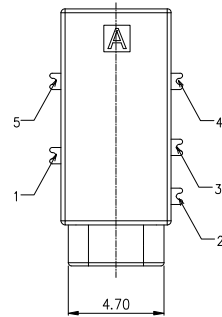
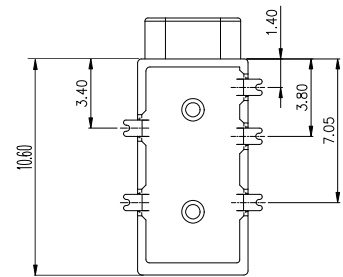


Kinghelm®

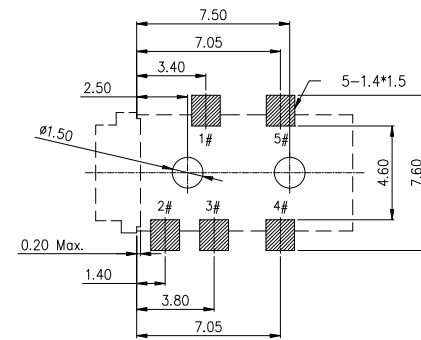
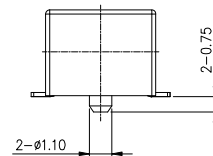
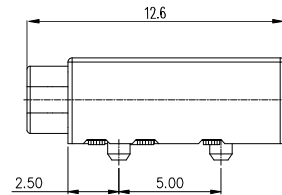
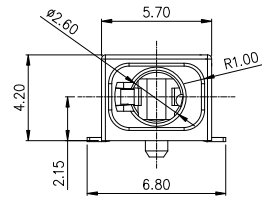
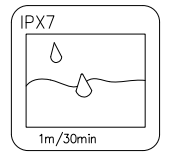
ZONE	ECN.N.O.	DESCRIPTION	DRAWING	DATE
A		INITIAL	林生财	2020.02.18



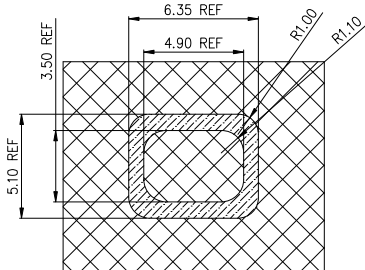
3D VIEW

NOTES

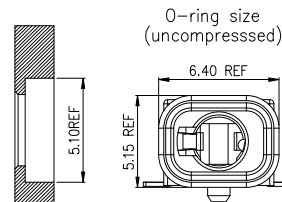
- CONTACT CURRENT RATING: 1A.
- CONTACT RESISTANCE: 100 mΩ MAX.;
- INSULATION RESISTANCE: 100MΩ MIN.;
- DIELECTRIC WITHSTANDING: 500V AC MIN.;
- DURABILITY: 5,000 CYCLES MIN.;
- CONNECTOR MATING FORCES: 30N MAX.;
- CONNECTOR UNMATING FORCES: 3N MIN.;
- TERPROOF LEVEL: IPX7;



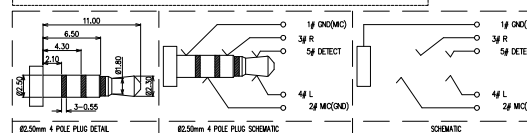
RECOMMENDED P.C.B LAYOU
TOP VIEW (TOLRANCE: ±0.05)



面板开孔参考尺寸



Not to install the waterproof ring shipment



NO.	DESCRIPTION	MATERIAL	REMARKS	QTY
4	GLUE	EPOXY	COLOR BLACK	1
3	TERMINAL	PHOSPHOR BRONZE	NICKEL UNDERPLATING OVERALL, GOLD FLASH PLATING ON THE SOLDER & CONTACT AREA	5
2	COVER	HIGH TEMPERATURE	COLOR BLACK	1
1	HOUSING	HIGH TEMPERATURE	COLOR BLACK	1

深圳市金航标电子有限公司

WWW.KINGHELM.COM.CN
0755-28190160

DRAWING: 林生财 DATE: 2020.02.18 SCALE: 1:1

CHECK: 李宏鑫 DATE: 2020.02.18 MATERIAL: *

SHENZHEN KINGHELM ELECTRON CO.,LTD.

TOLERANCE UNLESS OTHERWISE SPECIFIED:

0.0±0.25
0.00±0.20
0.00±0.10

0.±2°
0.0°±1°
0.00°±0.5°

UNIT: mm

APPROVAL: 杨进宝 DATE: 2020.02.18 DWG. NO. KH-PJ-20003-05SBAP-A

PART NAME WATERPROOF Ø2.5 PHONE JACK

DRAWING NO. KH-PJ-20003-05SBAP-A SHEET 1/1