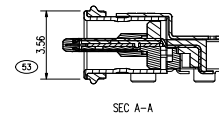
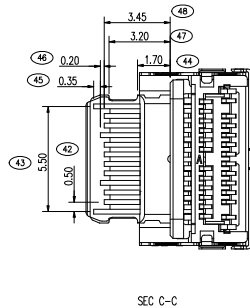
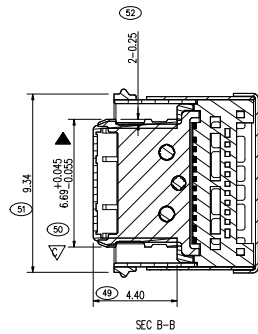
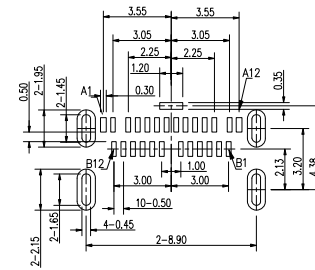
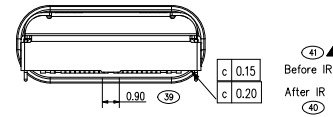
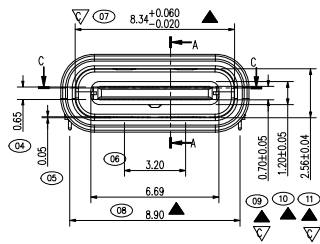
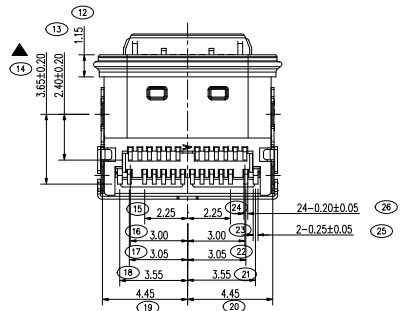


- NOTES:
- ELECTRICAL CHARACTERISTICS:
    - CONTACT CURRENT RATING: 5.0A FOR VBUS PIN AND ITS CORRESPONDING GND PIN.
    - CONTACT RESISTANCE: 30 MILLIOHMS MAX FOR VBUS AND GND CONTACTS. 40 MILLIOHMS MAX FOR ALL OTHER CONTACTS.
    - DIELECTRIC WITHSTANDING VOLTAGE: 100 VRMS AC MIN.
    - INSULATION RESISTANCE: 100 MEGOHMS MIN.
  - MECHANICAL CHARACTERISTICS:
    - CONNECTOR INSERTION FORCE: 5~20N. AT A MAXIMUM RATE OF 12.5MM PER MINUTE.
    - CONNECTOR EXTRACTION FORCE: 8~20N AT A MAXIMUM RATE OF 12.5MM PER MINUTE. 6~20N AFTER DURABILITY TEST.
    - DURABILITY: 10000 CYCLES.
    - OPERATING TEMPERATURE: -55℃ TO +85℃
  - SALT SPRAY: 48HOURS.
  - DIMENSIONS ARE IN MILLIMETERS, BRACKETED DIMENSIONS ARE INCHES EQUIVALENTS.
  - RECOMMENED PROCESS: IR REFLOW 260℃, 3~5SECONDS.
  - THE CONNECTOR IS ROHS COMPLIANT AND HALOGEN FREE COMPLIAN.
  - Mark " " REFERS TO FAI INSPECTION DIMENSION
  - Mark " " THE KEY INSPECTION DIMENSION OF IPQC
  - Mark " " IS S-PK SIZE



PN	SIGNAL NAME	PN	SIGNAL NAME	NO.	DESCRIPTION	MATERIAL	REMARKS	QTY
A1	GND	B12	GND	6	Waterproof glue	SILICONE (assembly)	COLOR BLACK	1
A2	SSTVP1	B11	SSRP1	5	CONTACT	C7025 t=0.12	Ni 50~150μm UNDER PLATED OVER, 30%Ni PLATED ON THE CONTACT AREA, 3~6%Au PLATED ON THE SOLDER TAILS.	24
A3	SSTVN1	B10	SSRP1	4	HOUSING	PA9F+300G.F	COLOR BLACK	1
A4	VBUS	B8	VBUS	3	LATCH	SUS304 t=0.15	NICKEL PLATED 30μm MIN. OVER ALL	1
A5	DC1	B8	SBU2	2	MAIN-SHELL	SUS304 t=0.20	CLEANING	1
A6	DP1	B7	DN2	1	SUB-SHELL	SUS304 t=0.15	NICKEL PLATED 30μm MIN. OVER ALL	1
A7	DN1	B6	DP2					
A8	SBUT	B5	CC2					
A9	VBUS	B4	VBUS					
A10	SSRN2	B3	SSTN2					
A11	SSRP2	B2	SSTP2					
A12	GND	B1	GND					

深圳市金航标电子有限公司

WWW.KINGHELM.COM.CN  
0755-28190160

DRAWING: 林生财 DATE: 2020.02.18 SCALE: 1:1

CHECK: 李宏鑫 DATE: 2020.02.18 MATERIAL: \*

APPROVAL: 杨进堂 DATE: 2020.02.18 DWG. NO.:

DRAWING NO. KH-TYPEC-48029-24SBAP-A SHEET 1/2

SHENZHEN KINGHELM ELECTRON CO.,LTD.

PART NAME WATERPROFF TYPE C 24 PIN

TOLERANCE UNLESS OTHERWISE SPECIFIED: 0.0±0.35, 0.00±0.25, 0.00±0.20, 0.±2", 0.0±1", 0.00±0.5"

UNIT: mm

